



Who governs and how is power distributed? Decision-making in local government.

DR BRÍD QUINN

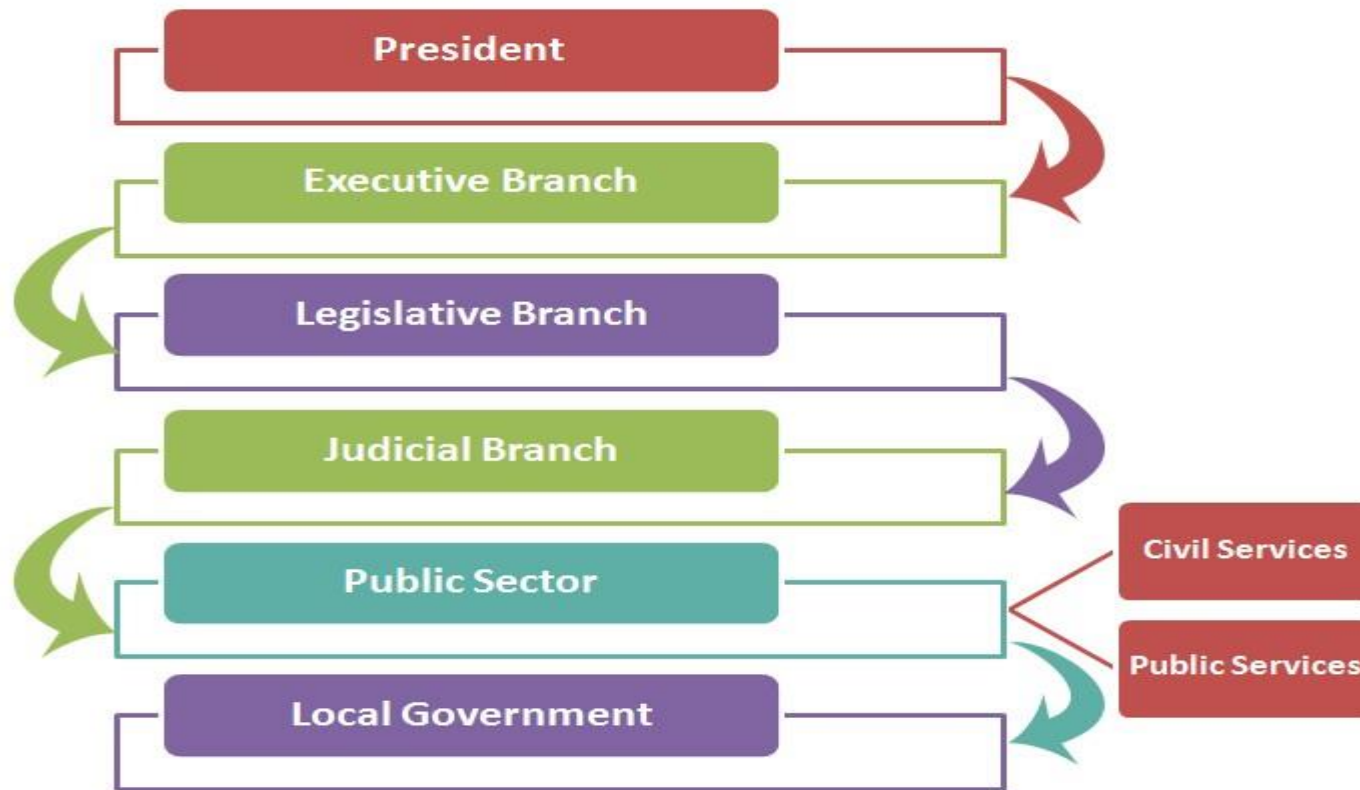


Introduction

- The first of the terms of reference of this Assembly is to consider: the strengths and weaknesses of the current model of local government in Dublin
- In order to carry out such assessment it is useful to outline the current power structures and decision-making processes and identify the range of actors and bodies involved



Local Government in Ireland's governance hierarchy



Local Government decision-making

WHO MAKES DECISIONS

ELECTED COUNCIL

Policy decisions are made by the elected councillors during council meetings. These decisions may be made at 2 levels:

- I. Full council (Plenary Level)
- II. Municipal/Metropolitan/Borough District Level/Area Committee Level

THE CHIEF EXECUTIVE

The Chief Executive, assisted by a senior management team, manages a local authority on a day-to-day basis. It is the duty of the chief executive to advise and assist the elected council.

Both councillors and the chief executive have a common interest in **servicing the community**.

DECISIONS MADE BY COUNCILLORS AT FULL COUNCIL:



APPROVING AN ANNUAL BUDGET



LOCAL ECONOMIC & COMMUNITY PLANS



HOUSING POLICY DECISIONS



COMMERCIAL RATES



VARIATION IN LOCAL PROPERTY TAX RATE



COUNTY/CITY DEVELOPMENT PLANS

DECISIONS MADE BY COUNCILLORS AT DISTRICT LEVEL:



ADOPTING ECONOMIC STATEMENTS FOR FULL COUNCIL TO CONSIDER



LITTER PREVENTION & CONTROL



ANNUAL SCHEDULE OF PROPOSED MUNICIPAL/METROPOLITAN/BOROUGH DISTRICT WORKS



CHARGES FOR COUNCIL AMENITIES, FACILITIES & SERVICES



FUNDS FOR COMMUNITY INITIATIVES



SCHOOL WARDENS' ARRANGEMENTS

DECISIONS MADE BY COUNCILLORS AT FULL OR LOCAL LEVEL:



CIVIC HONOURS



PROTECTED STRUCTURES



LOCAL AREA PLANS



FLOOD RISK MANAGEMENT



HOUSING SERVICES PLANS

The Councillors' Decision-making roles

Role of the Chief Executive



DAY TO DAY
MANAGEMENT OF THE
COUNCIL



EMPLOYEE OF THE
COUNCIL



EXECUTIVE FUNCTIONS



DELEGATION OF
EXECUTIVE FUNCTIONS



CARRY INTO EFFECT
ALL LAWFUL DECISIONS
OF THE ELECTED
COUNCIL



IMPLEMENTATION OF
POLICY



ADVISE AND ASSIST THE
ELECTED COUNCIL,
CPG, SPC'S AND LCDC

Within Irish local authorities there are many structures and processes for decision – making, involving a range of actors.

**MUNICIPAL/BOROUGH/
METROPOLITAN DISTRICTS**

CORPORATE POLICY GROUP

**STRATEGIC POLICY
COMMITTEES**

**LOCAL COMMUNITY
DEVELOPMENT COMMITTEES
(LCDC)**

AUDIT COMMITTEE

OTHER COMMITTEES

JOINT COMMITTEES

**EXTERNAL COMMITTEES/
BODIES**



LEITRIM JOINT POLICING COMMITTEE
DOMESTIC VIOLENCE AWARENESS

IF YOU ARE A VICTIM OF ABUSE OR YOU KNOW OF A FAMILY MEMBER OR FRIEND WHO IS A VICTIM OF SUCH ABUSE, PLEASE MAKE CONTACT WITH AN GARDA SÍOCHÁNA. **A CONFIDENTIAL FREE-PHONE LINE NUMBER 1800 555 222 IS MANNED ON A 24-HOUR BASIS, 7 DAYS A WEEK, 365 DAYS A YEAR.**

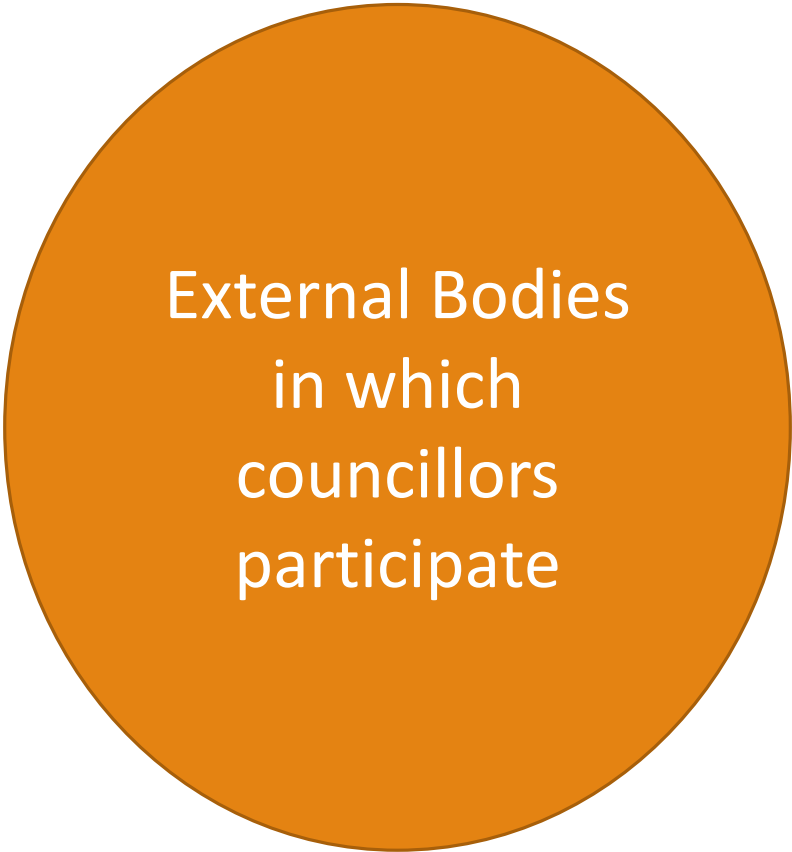
 

CARRICE-ON-SHANNON GARDA STATION **071 96 50510**
MANORHAMILTON GARDA STATION **071 98 20620**

IF YOU REQUIRE URGENT ASSISTANCE OR SUPPORT, PLEASE CALL 999 OR 112.

How Councils Formally Make Decisions





External Bodies
in which
councillors
participate

- I. Regional Assemblies
- II. HSE Forums
- III. Third Level Governing Bodies
- IV. Educational and Training Boards
- V. Cross Border Bodies
- VI. Sports Partnerships
- VII. Drugs Tasks Force
- VIII. River Basin Management Committees
- IX. Údarás na Gaeltachta and Forbartha Gaeilge.

Conclusions

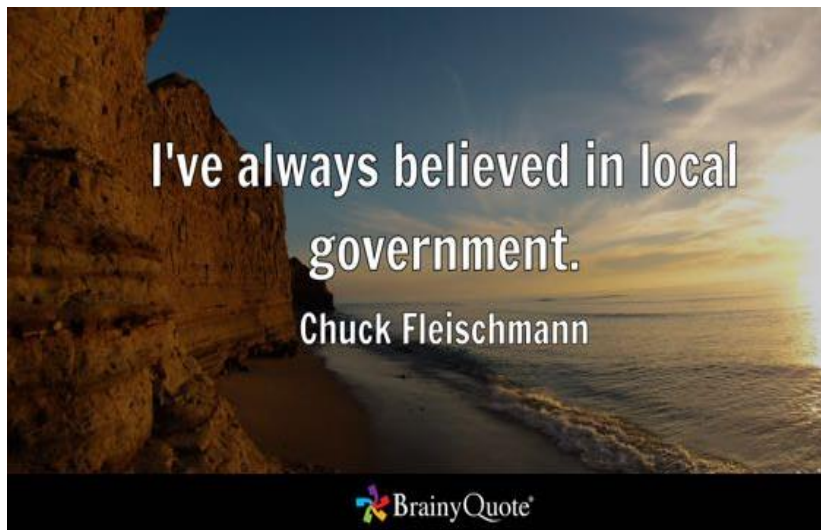


Local government provides a forum for local decision-making but its actions are framed by obligations and constraints set at central level

Decision-making in local government has clear roles for elected members, public servants and citizens/community organisations

Councillors play a key role in the activities of state agencies and other external bodies

Local government leads and facilitates the co-ordination of services at local level



Go raibh maith agaibh