

City and County Childcare Committees

Presentation to Dublin Citizens' Assembly

Overview

- Current Structure of CCC's
- Profile of CCCs
- Local authorities' current role in childcare
- Challenges in current policy
- Current collaboration
- Potential new role

Structure

30 CCCs

- One in each local authority area – four CCC's in Dublin

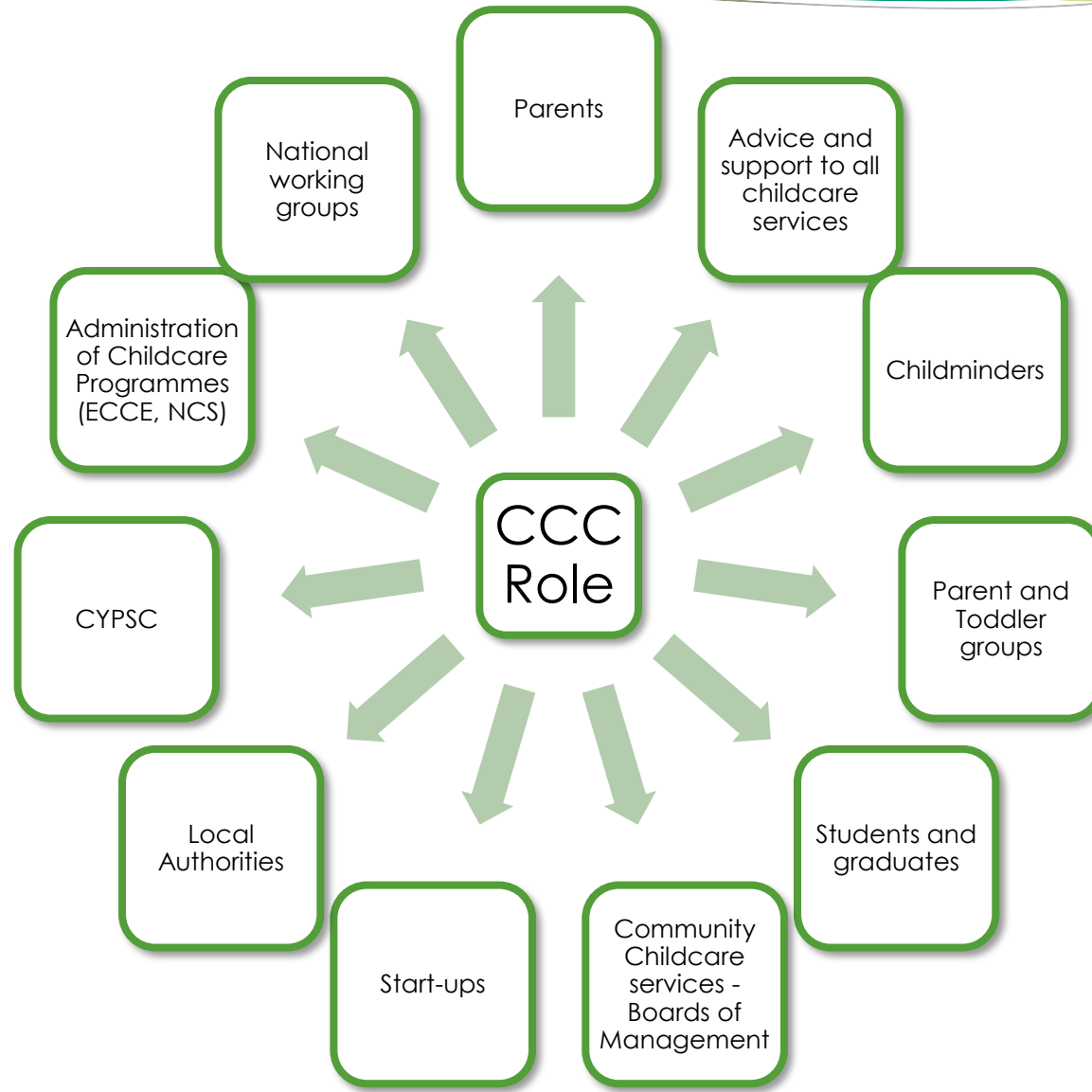
CCI

- National Representative Group – 6 CCC's

Childcare
Ireland

- New statutory agency being developed – national coordinated structure with local presence





Local authority current role in Childcare

- Existing policy
 - – Planning Guidelines 2001 require one childcare facility contain 20 spaces for every 75 homes – not always fit for purpose.
 - CCCs are named in the planning guidelines as a consultative source under 285(5) of the Planning and Development Strategic Housing Regulation for Local Authorities and An Bord Pleanala. In keeping with this, planners refer developers to CCCs as a key step in the consultative planning process.

- Fire regulations – County Fire services ensure childcare facilities adhere to fire regulations

-

Challenges in current policy



- Considerable overlap, duplication and particularly in Greater Dublin area and gaps in other areas
- Creches closing to make way for housing developments – closures low but impact high –
- Current guidelines may not meet the specific need for the development/area
- Suitable design – need to be child and family centered
- Reluctance in some instances for developers to provide such facilities – not childcare providers, cost of same (more profitable to build house rather than childcare facilities)

Challenges for the sector

- Accessibility – shortage of places particularly in urban areas
- Affordability – Cost of childcare – Greater Dublin Area

County	Average weekly fee
DLR	244.08
Fingal	214.30
South Dublin	214.08
Dublin City	213.85
Wicklow	213.36
	Early Years Sector Profile 2020/2021

Current Collaboration

- Some local authorities working closely with CCC's where they
 - Seek advice from CCC to identify local need
 - Urge planning consultants and developers to seek support and advice on design of such services
- Ad hoc – does not take place in all Local Authority areas –

Proposed changes

- New funding model for Early learning and care and School Age Childcare - Funding for fee freeze, staffing costs
- Review of the sector proposes a new Operating Model in Ireland

Does identify need for national policy and national budget but local structures must be a feature to deliver planning and support functions so opportunity for collaboration with local authorities

Future collaboration

- If a directly elected Mayor for Dublin – more cohesion between all existing areas and neighbouring local authority areas
- Consideration given to policy change to meet the needs of all local authority areas including Dublin - levy charged per residential unit – collected and held by local authority
- Collaboration between local authority and new Agency to ensure this funding could be used to build fit for purpose childcare facilities where needed within the Dublin area

- Large scale capital funding also – 70 million euro investment 2023-2025 - great opportunity for enhanced collaboration and cooperation between CCC's/New Agency and local authorities
- Examine existing stock – publicly owned land/buildings could be used for new community services



Possible collaboration

- Local authority work with CCC's/new Agency to ensure the need within areas is met
- Could include **childcare, community space, multi purpose buildings** - family hubs to cater for all ages
- Demographics and needs of areas change – childcare but could evolve to **daycare** –
- Benefits and challenges with any new structures



Thank You