



An Tionól
Saoránach

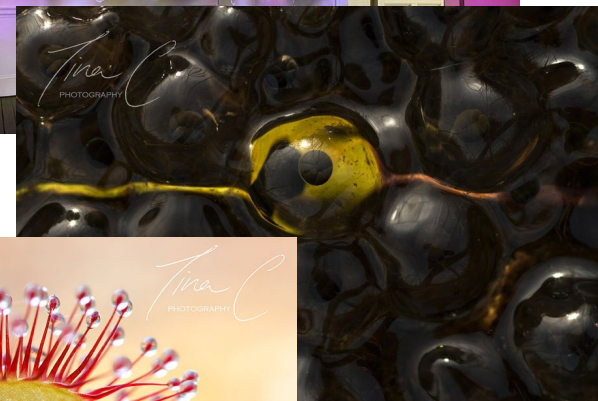


The Citizens'
Assembly

Peatlands

Dr. Catherine Farrell MCIEEM
Ecologist

 @seewilkie





What are peatlands? Why do they develop...
what is peat?



Where do we find peatlands? Globally & locally?



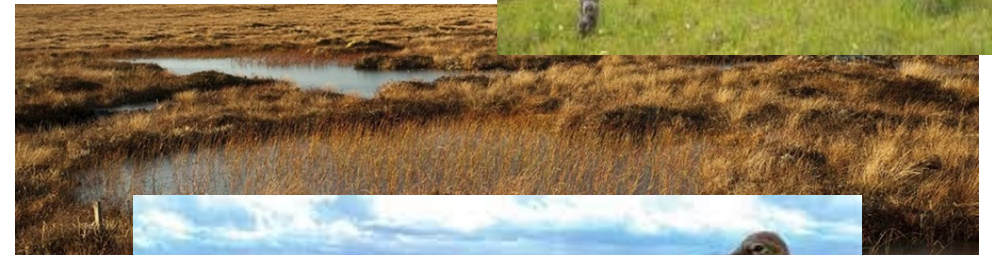
Peatland matters: biodiversity and ecosystem services



How do we use peatlands and what state are peatlands in?



From Dig to Dam: 100 years of policy



Peat-lands



**Peat =
Un-decomposed organic matter formed in
waterlogged conditions**



Pe
In

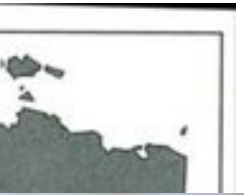
Pe

Pe

(in
pe

Connolly (2011)

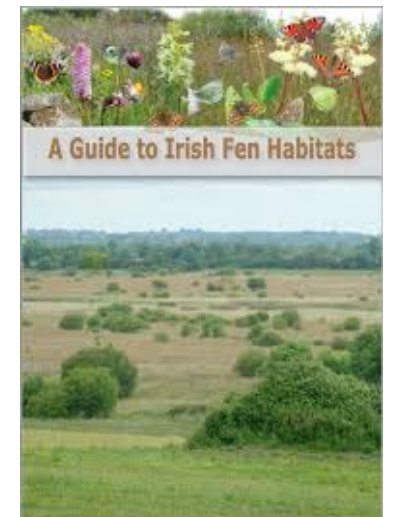
Ir
Ir



Peatland =
water + peat (soil) + biodiversity



Fens



Ire

A story
where t

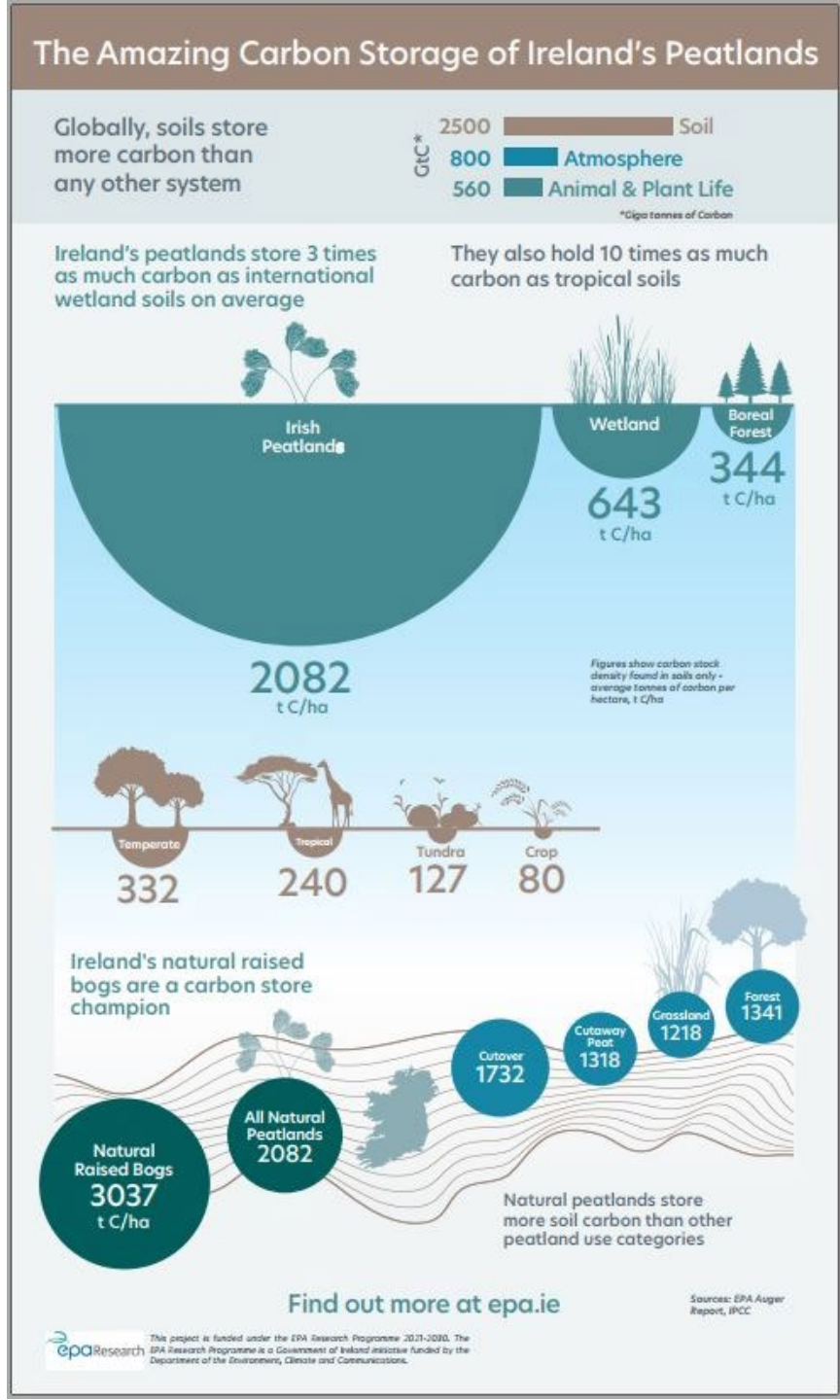
us Fe

Bogs

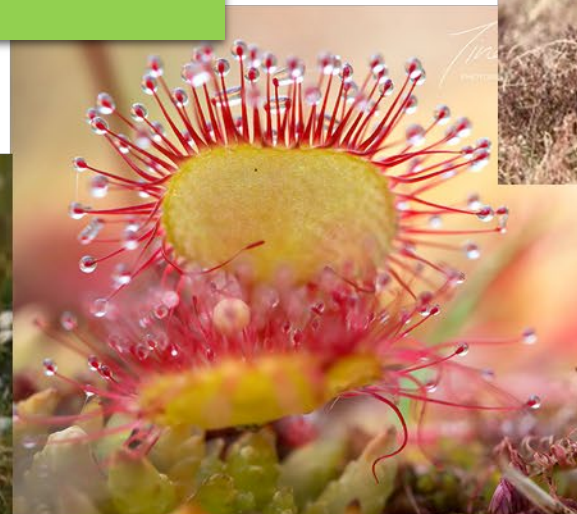
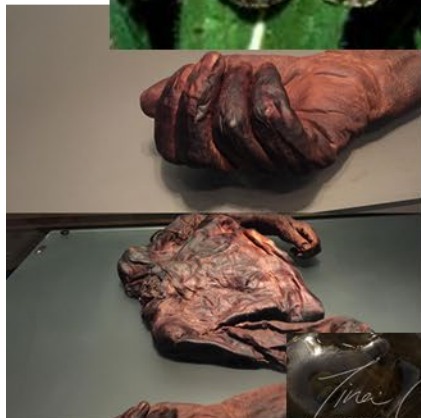


Ecosystem Services: Water – Climate (*peat*) – Biodiversity - Cultural

- **Water:** water quality, water storage (food regulation); water flows
- **Climate:** carbon stock, carbon sink (source?), sediment retention, palaeoecological record
- **Peatlands cover ~3% of the Earth's land surface, but store about double the amount of carbon in all forests (~30% of the land area).**
- **Biodiversity:** vulnerable habitats and species (bogs, fens, Red Grouse, Hen Harrier, Curlew)
- **Cultural:** landscape, sense of place, folklore, 'day on the bog', inspiration – music, art...



Peatland =
water + peat (soil) + biodiversity





Status of Irish Peatland habitats & species

Draining peatlands harms the environment

~10% of the global greenhouse gas emissions from the agriculture, forestry and land use sector are caused by the draining of peatlands.

When intact peatlands are drained carbon losses via water increase by 50%

Transports contaminants and pollutants

Worsens drinking water quality

Negative effects on aquatic species

Leads to agricultural productivity loss

Increases risk of flooding and droughts

Causes salt water intrusion

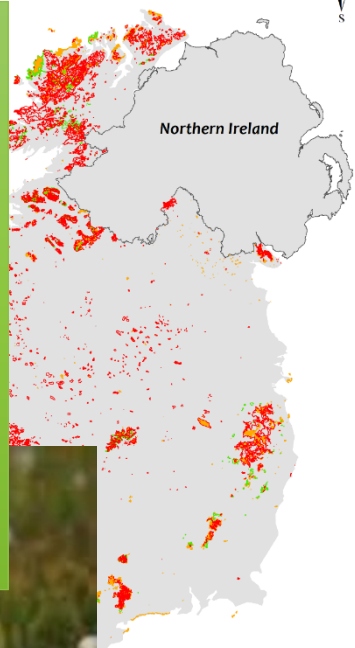
The surface of the land can decrease in height up to 2.5 metres after 25 years of drainage.

Degraded peatlands harm our environment

Status of Article 17 Peatland and Heathland Habitats 2019 in the Republic of Ireland



Trend of Article 17 Peatland and Heathland Habitats 2019 in the Republic of Ireland



Status

Inadequate

Bad

Non Article 17 Peatland and Heathland Habitats

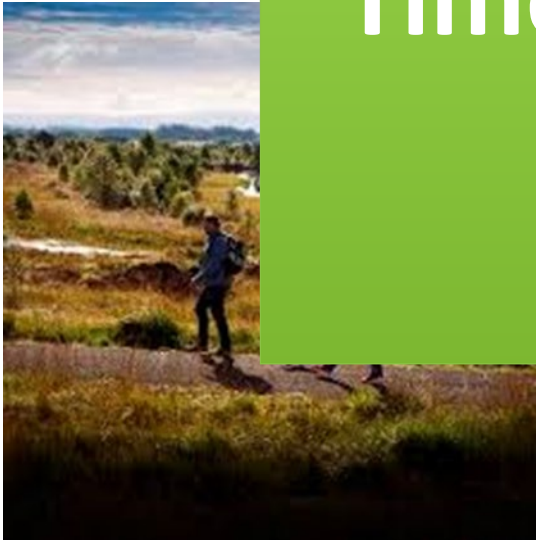


0 25 50 100
Kilometres

Lisa Coleman 15th January 2021
Source: EPA, NPWS



From Dig to Dam: Time to change perspectives on Land-use





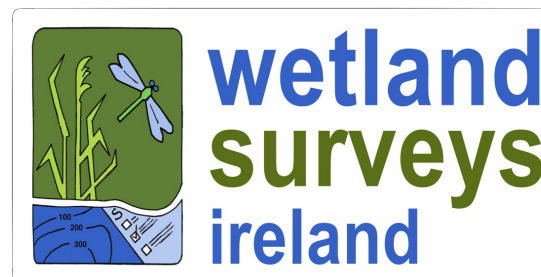
WILD ATLANTIC
NATURE LIFE

LIFE IP Wild Atlantic Nature Results-Based
agri-environment Scheme (RBPS)
Information booklet
May 2021

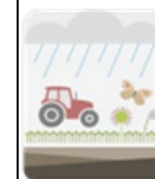
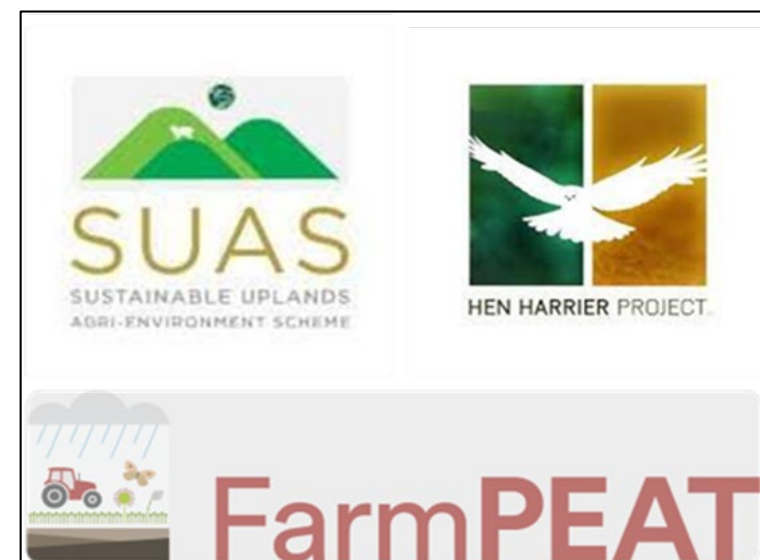


Bord na Móna

@WaterLANDS_EU



Time to:
Rethink (policy)
Renew (ambition and innovation)
Restore (the future)
Reap (co-benefits)



FarmPEAT



Time to restore





Thank you

#PeatlandsMatter