

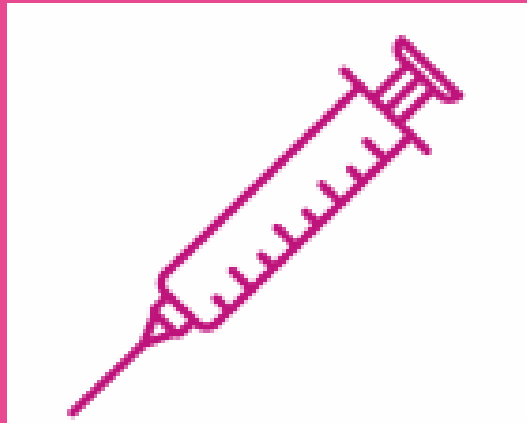


Harm reduction initiatives for the night-time economy

Adapting how we respond to a new drug landscape

NICKI KILLEEN
HSE National Social Inclusion Office
Citizens Assembly on Drug Use, 24th June 2023

DRUG USE POPULATIONS CAN NO LONGER BE EASILY DEFINED



Service Users



General Population



Nightlife



Closing Gender Gaps



"Psychonauts"

HSE Safer Nightlife Programme 2022-2023

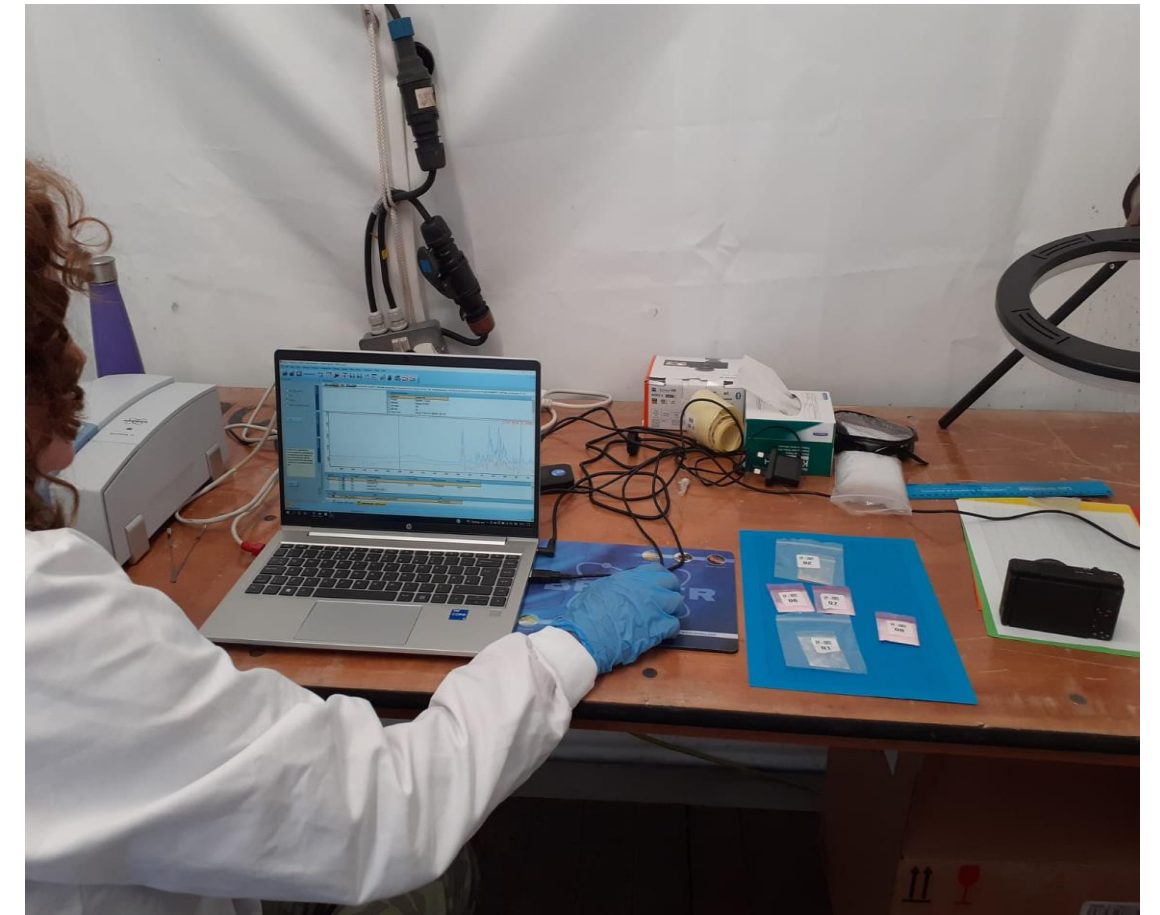
1. Resource development
2. Media and social media
3. Volunteer recruitment and training
4. Harm reduction outreach
5. 'Back of house' drug testing pilot



'Back of house' Drug Checking



HSE surrender bin



Sinead Mc Namara and HSE National Drug Treatment Centre Laboratory



Not the HSE bin



HSE Caution: 3-CMC found in white crystals

We have identified 3-CMC a 'synthetic cathinone' substance as large white crystals in our lab onsite at Electric Picnic.

What is 3-CMC?
3-CMC is a potent stimulant-type drug.

We are aware of similar 'cathinone' type substances being found in the UK this summer sold as MDMA pills, powders and crystals.

You can never be fully sure of the contents of pills, powders or crystals.

These substances can produce strong stimulant effects which can make people feel unwell.

They can lead to prolonged stimulation, insomnia, anxiety, paranoia, suicidal feelings, psychosis with negative come downs and after effects. They can also cause cravings which could lead to overconsumption/overdose.

It's safer not to use at all, if you do, get information to help you reduce the harms on [Drugs.ie](https://www.drugs.ie)

Don't be afraid to get medical help if you or a friend feels unwell or suicidal after using drugs.

#ReduceTheHarm DRUGS.ie

Outputs

Health-led



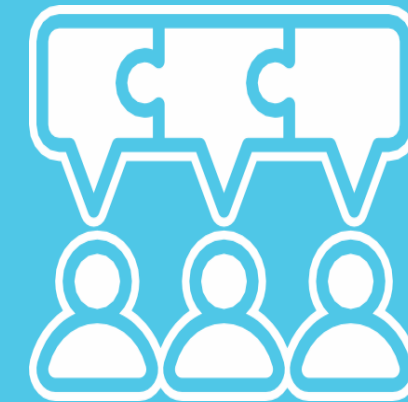
- New stakeholders
- Collective action to reduce harms

Harm Reduction



- Changing mainstream dialogue
- Service barriers and fear
- Stigma reduction

New outreach service



- Innovative – for Ireland
- Education in new ways
- Harm reduction interventions
- Trust

ANALYSIS



- 177 samples
- First quantitative results of MDMA
- MDMA range 50mg – 265mg / average adult dose 75mg – 125mg
- 4-7 first identifications – drugs never found before in Ireland
- 6 risk communications
- 1 MDMA update

FIRST IDENTIFICATION

3-CMC

5-MAPB

4-HO-MiPT



NEXT STEPS



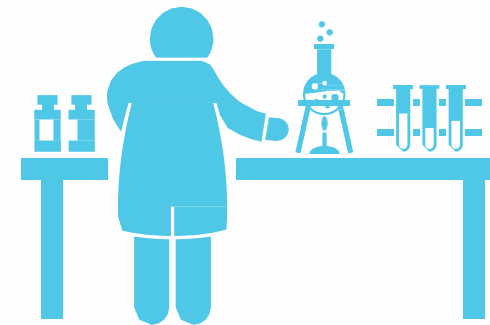
- Feedback
- Review
- Improve



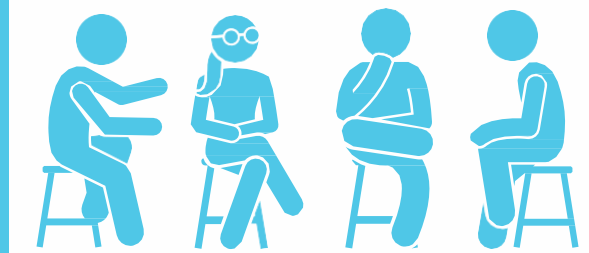
- Improve research
- Other monitoring projects



- Expand harm reduction services for non-dependent groups



- Dedicated lab
- 'Front of house'
- Community



- Health, Culture and night-time economy

Nicki Killeen

Emerging Drug Trends Project Manager

[E: Nicki.killeen@hse.ie](mailto:Nicki.killeen@hse.ie)

Social: @drugsdotie

