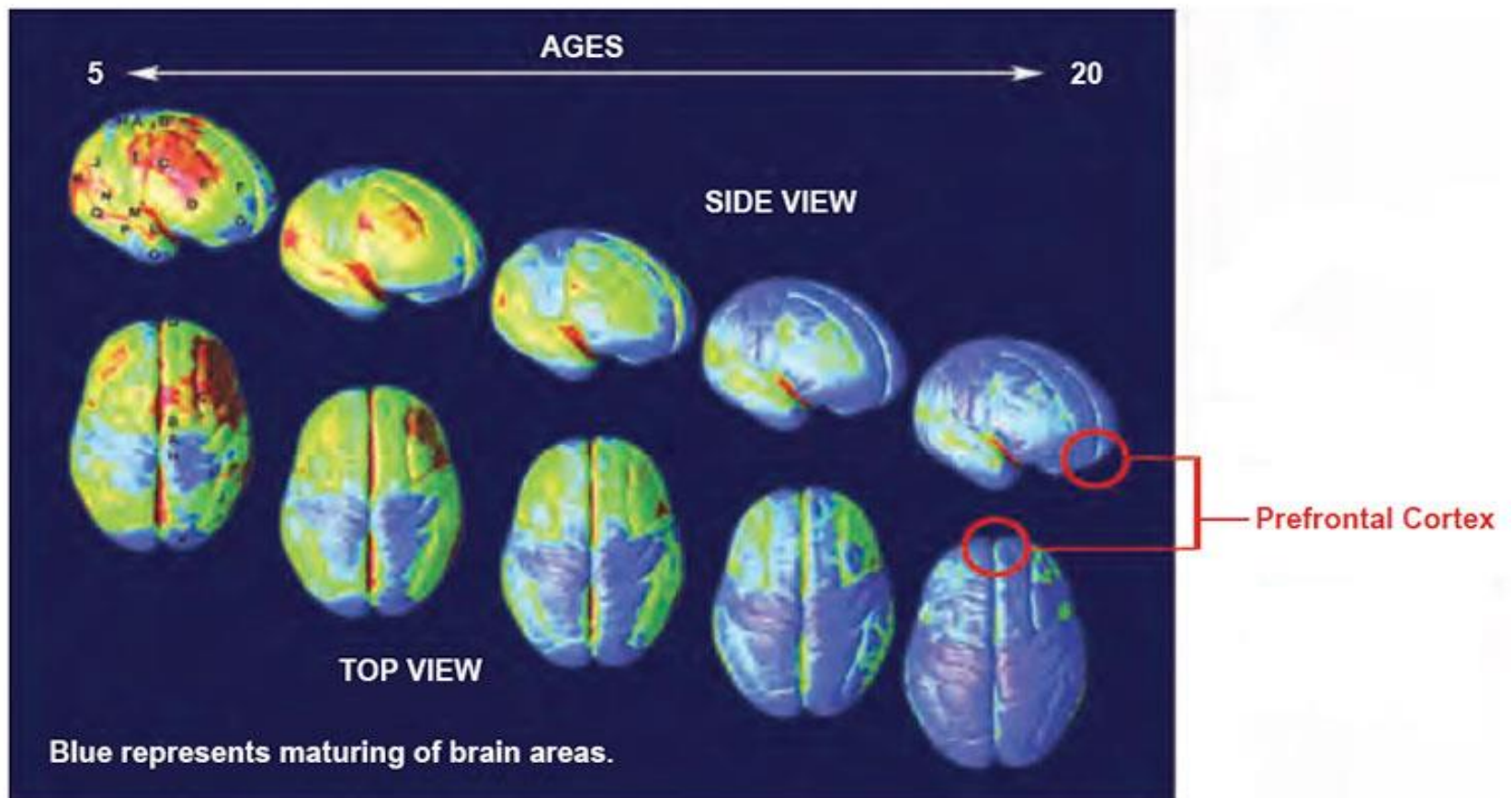


Brain development with age



Why people use drugs?

Caution against over-reaction. Importance to maintain relationship



FOLLOW
YOUR
DREAMS

CANCELLED



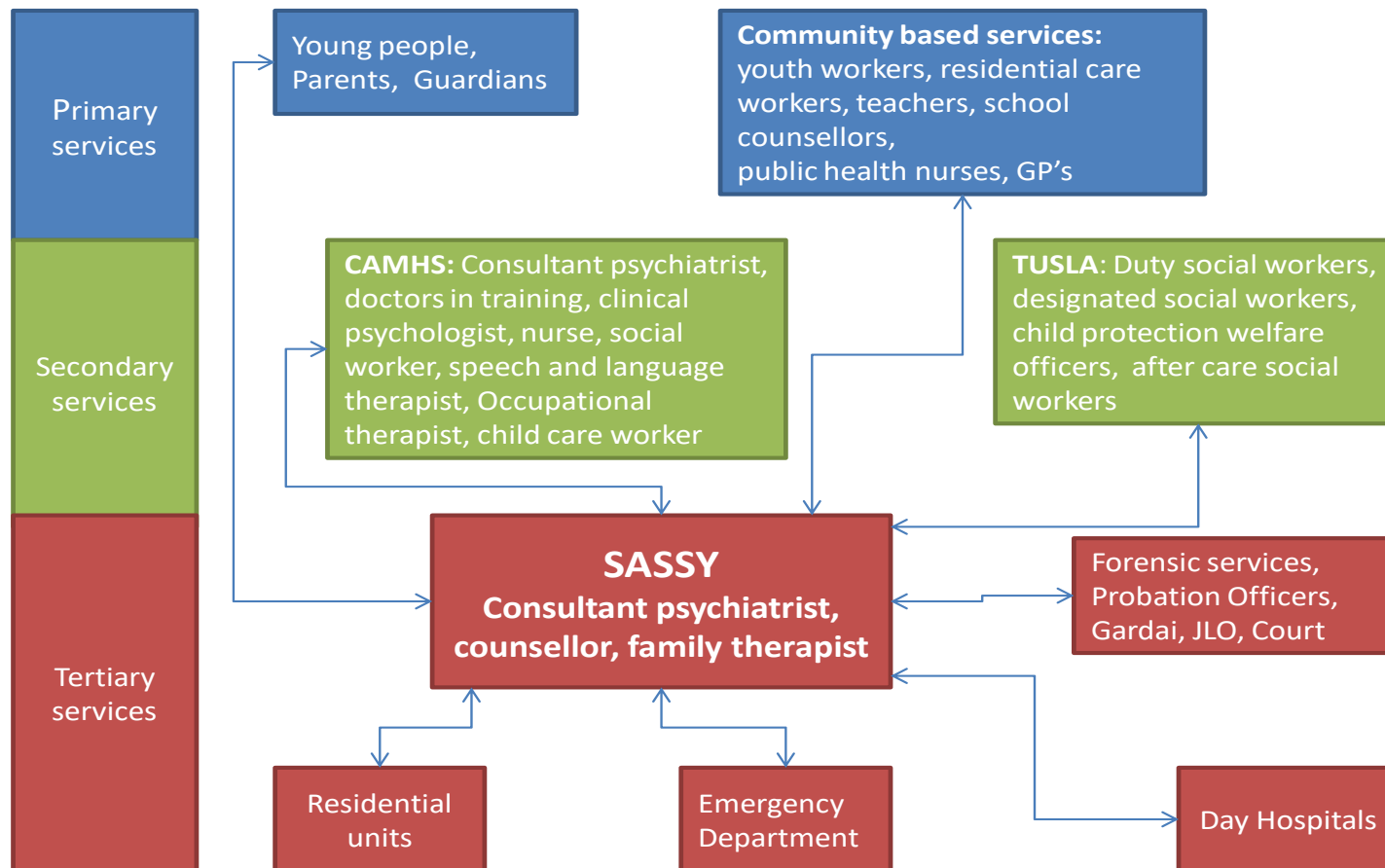
4 TIER MODEL

CAMH-child & adolescent mental health/ CAA- child & adol. addiction

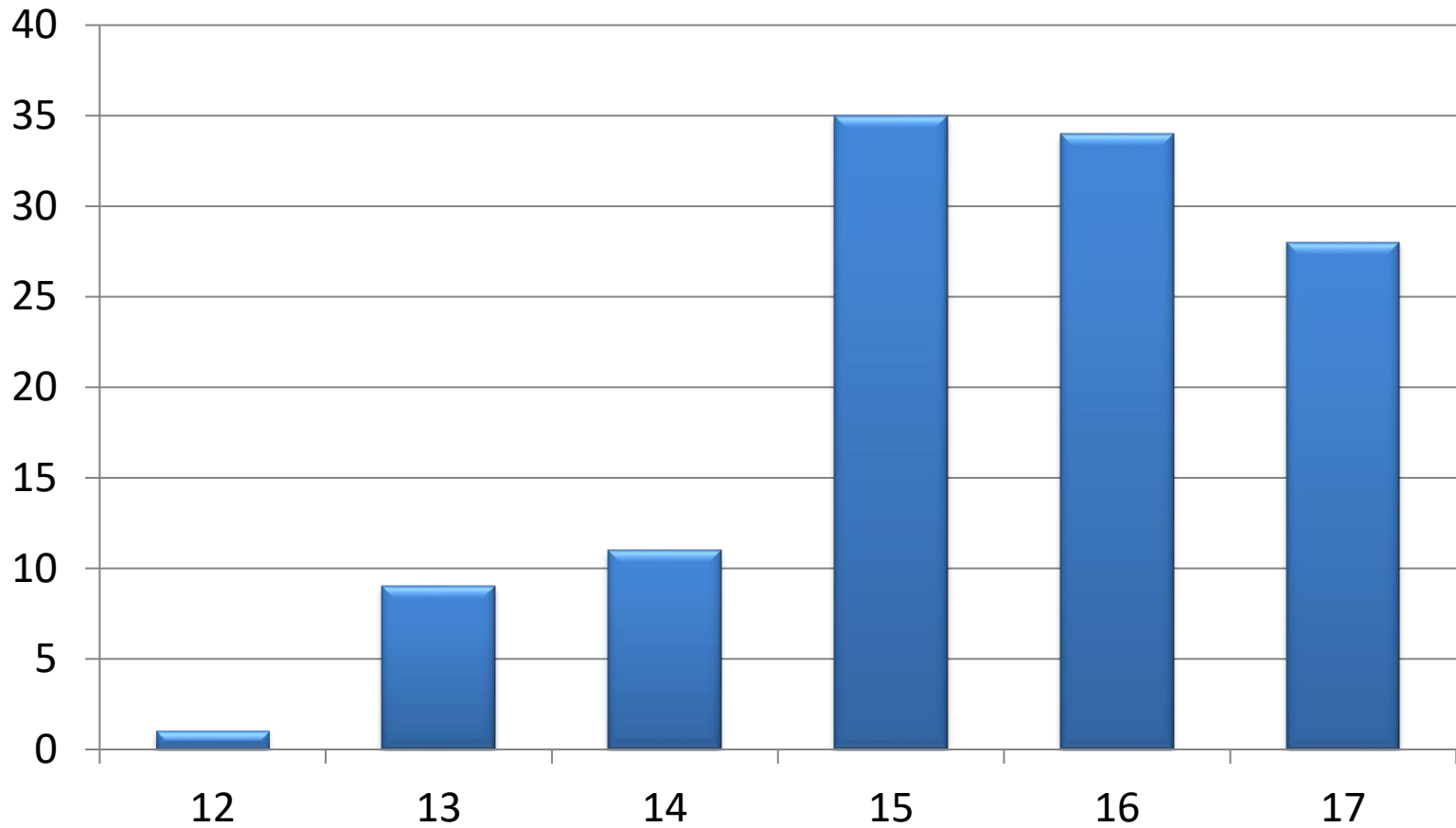
Tier level	Specialist skills available to help young drug users	Type of adolescent accessing service	Type of intervention for drug use	Intervention delivered by	Examples of such services	Intensity and duration
Tier 1	NOT either CAMH or CAA	Start of drug use	Basic advice +/- referral	Individual professional	Teacher, SW, GP, A&E, PO	Low intensity-ongoing
Tier 2	Either CAMH or CAA	Problems due to drug use	Basic counselling, brief intervention, harm reduction	Individual or MDT	CAMHS, Addiction DTF,	Medium intensity-Medium duration
Tier 3	Both CAMH & CAA based in the community	Substantial problems due to drug use	Specialist counselling, family therapy, medication	Specialist MDT in adolescent addiction	Specialist adolescent addiction service	Hi-intensity, Short / medium/ long term
Tier 4	CAMH & CAA at In-Patient / Day hospital	Severe problems or drug dependence	Individual & family therapy medication, residential-detox / stabilise	specialist MDT in adolescent addiction	Specialist day hospital or in-patient adol. Addiction	Very high intensity , Short/ medium/ long term

Stakeholders

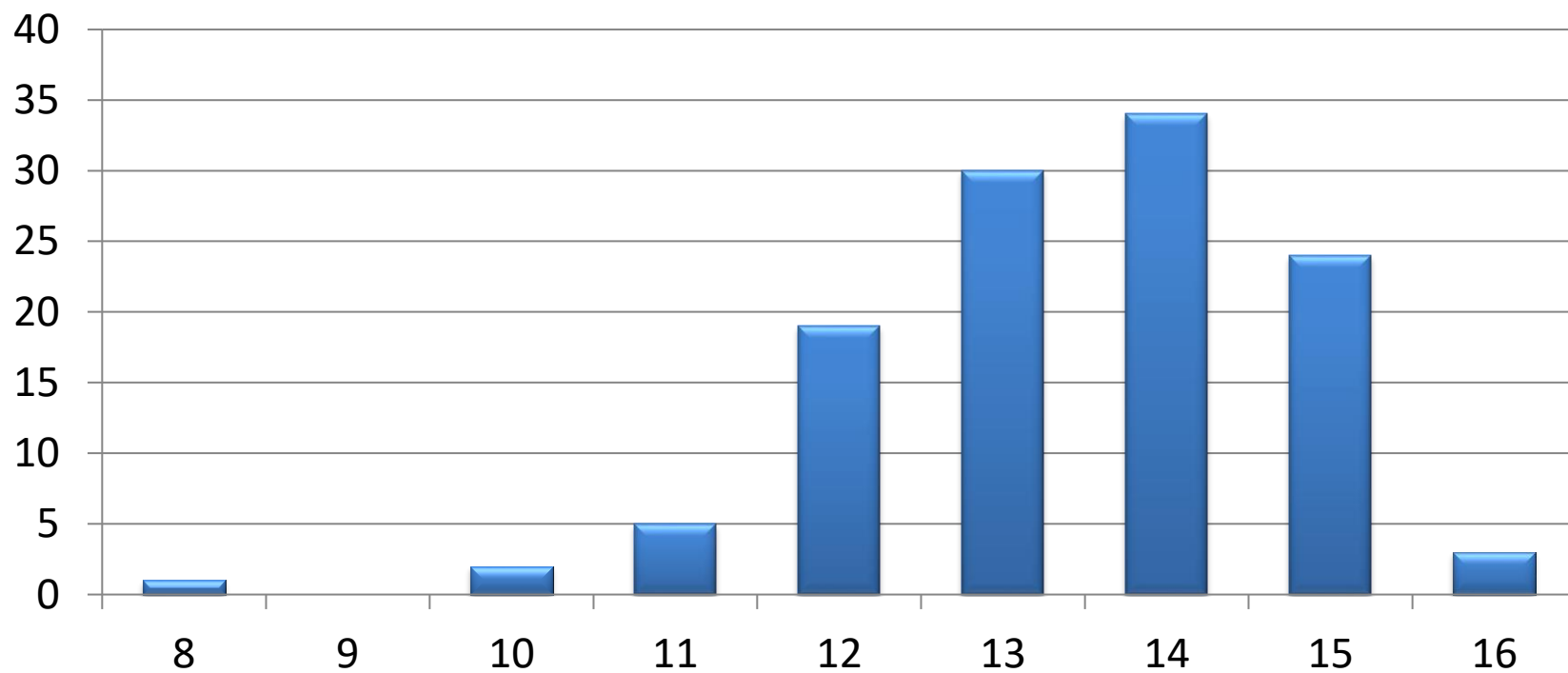
SASSY MODEL OF CARE



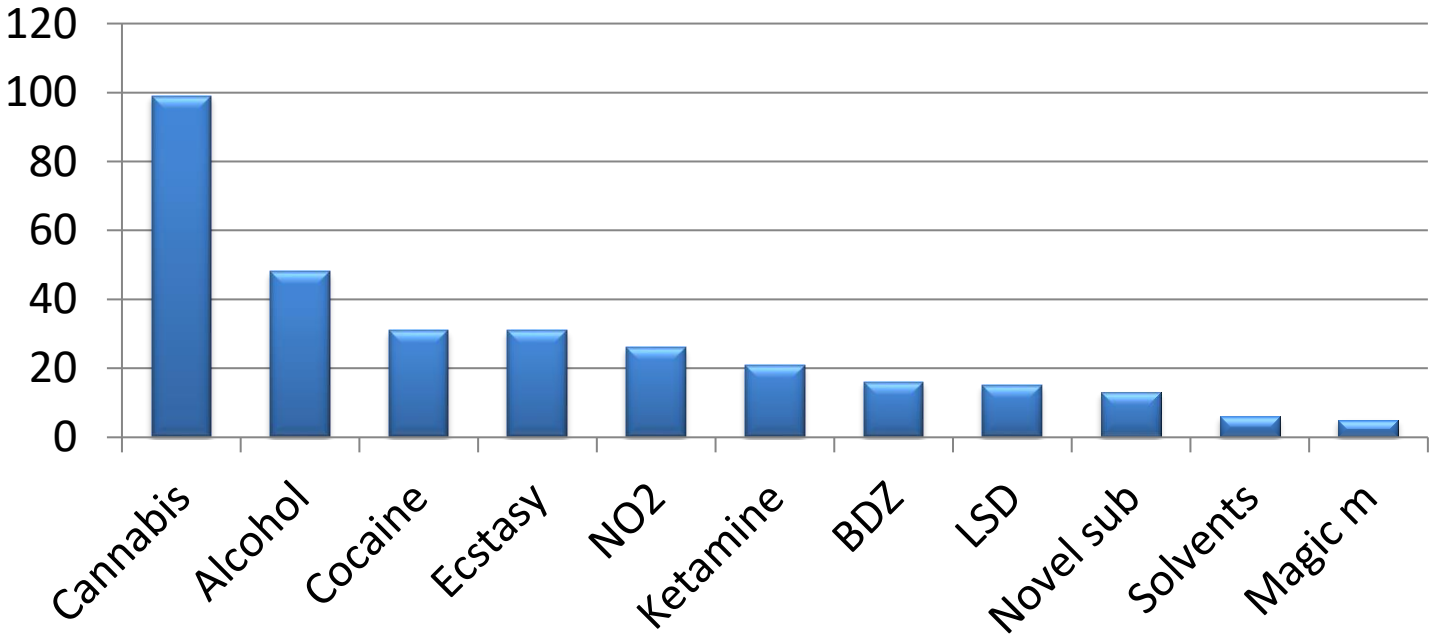
2022: Age – Referral (118 SU)



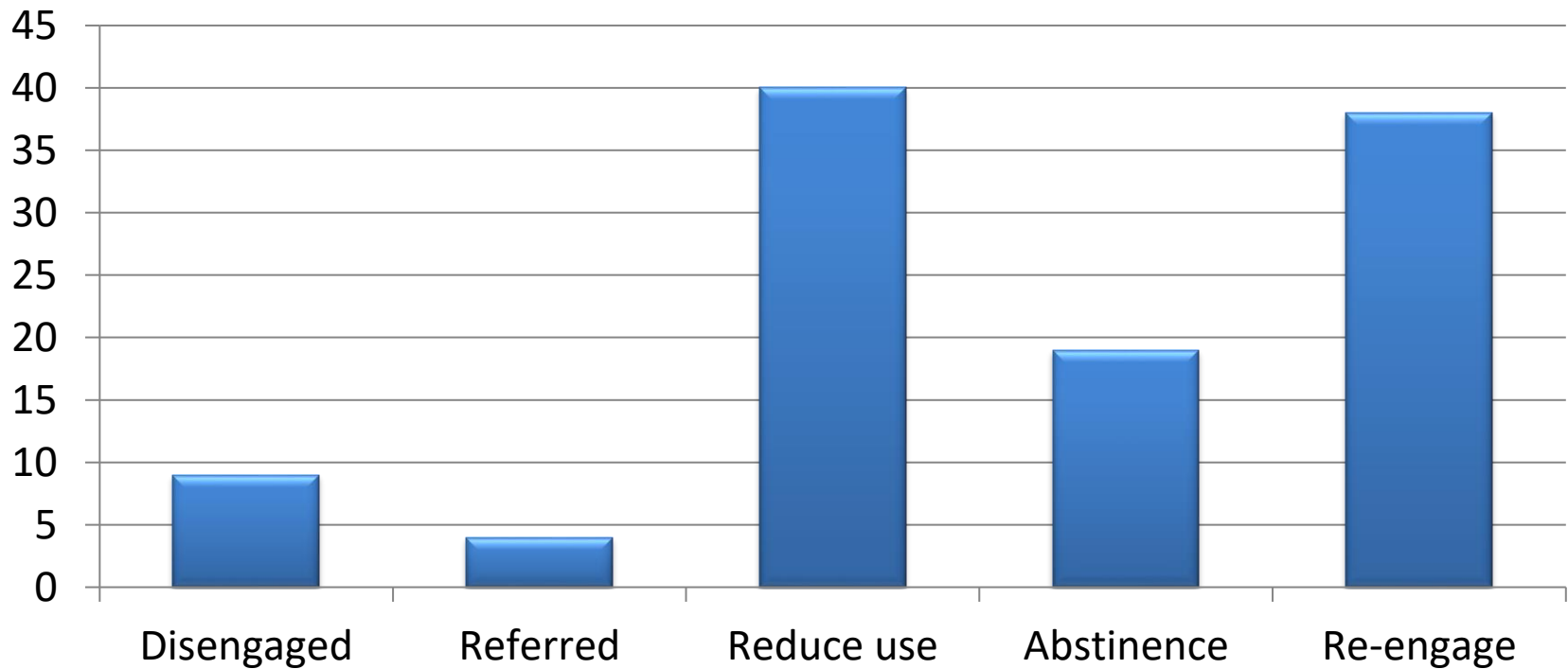
2022: Age first use (118 SU)



2022: Drugs of choice -Polysubstance (118 SU)



2022: Exit outcomes (76SU)



HUB & SPOKE MODEL

