



An Roinn Oideachais
Department of Education

Department of Education Perspectives on Prevention

Celeste O'Callaghan

Principal Officer, Curriculum and Assessment Policy Unit

30 September 2023

Meeting 5 of Citizens' Assembly on Drugs Use

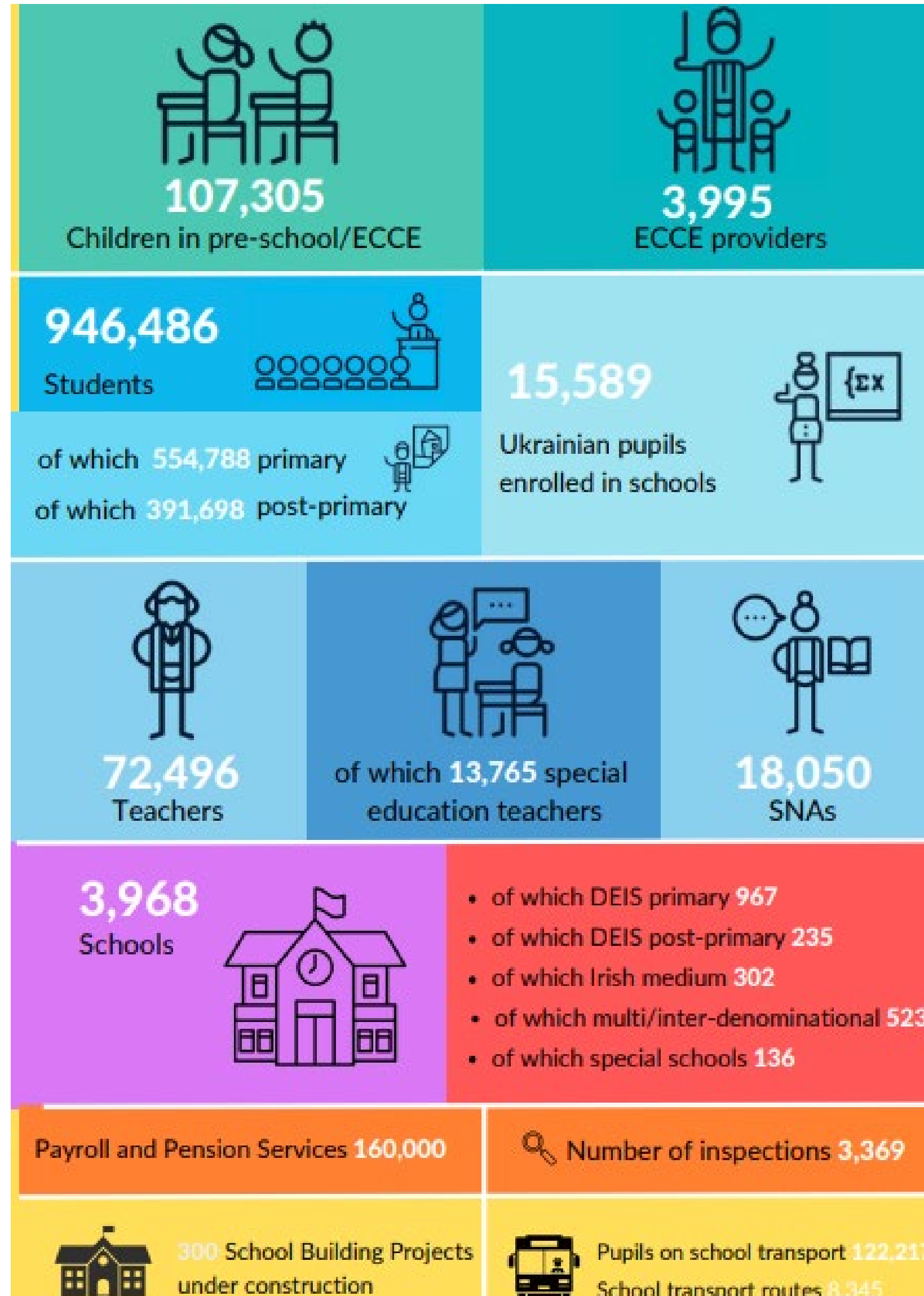
Grand Hotel, Malahide

Department of Education

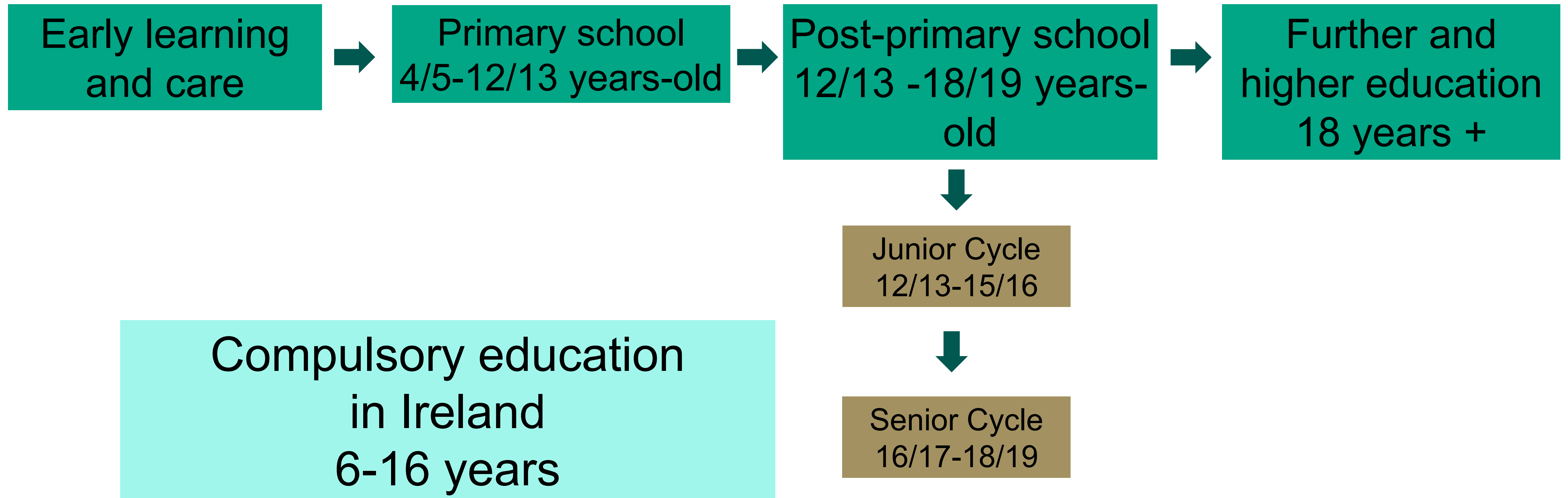


Vision – an education system where every child and young person feels valued and is actively supported and nurtured to reach their full potential.

Mission – to ensure that all children and young people have access to a positive learning experience and to facilitate them, through learning, to realise their full potential and contribute to Ireland's social, economic and cultural development.



Stages of education in Ireland



Social, Personal and Health Education – where we are today



Level	Where	Timetable for updating
Primary	All schools	Primary Wellbeing curriculum in development – for consultation 2024, to introduce 2025
Junior Cycle 2023 SPHE Specification	All schools, from September 2023	New Junior Cycle SPHE curriculum for all first years this September
Senior Cycle SPHE Framework	A minority of schools	New Senior Cycle SPHE curriculum drafted and open for public consultation until 18 October , aim to introduce September 2024 – please submit your views

SPHE – where we are going



- Major programme of SPHE update – all stages
- To equip our children and young people with the knowledge, skills, dispositions to navigate a fast-changing world
- Appropriate to age and stage of development
- Supported by teacher professional learning and classroom and teacher resources

A closer look at new Junior Cycle SPHE



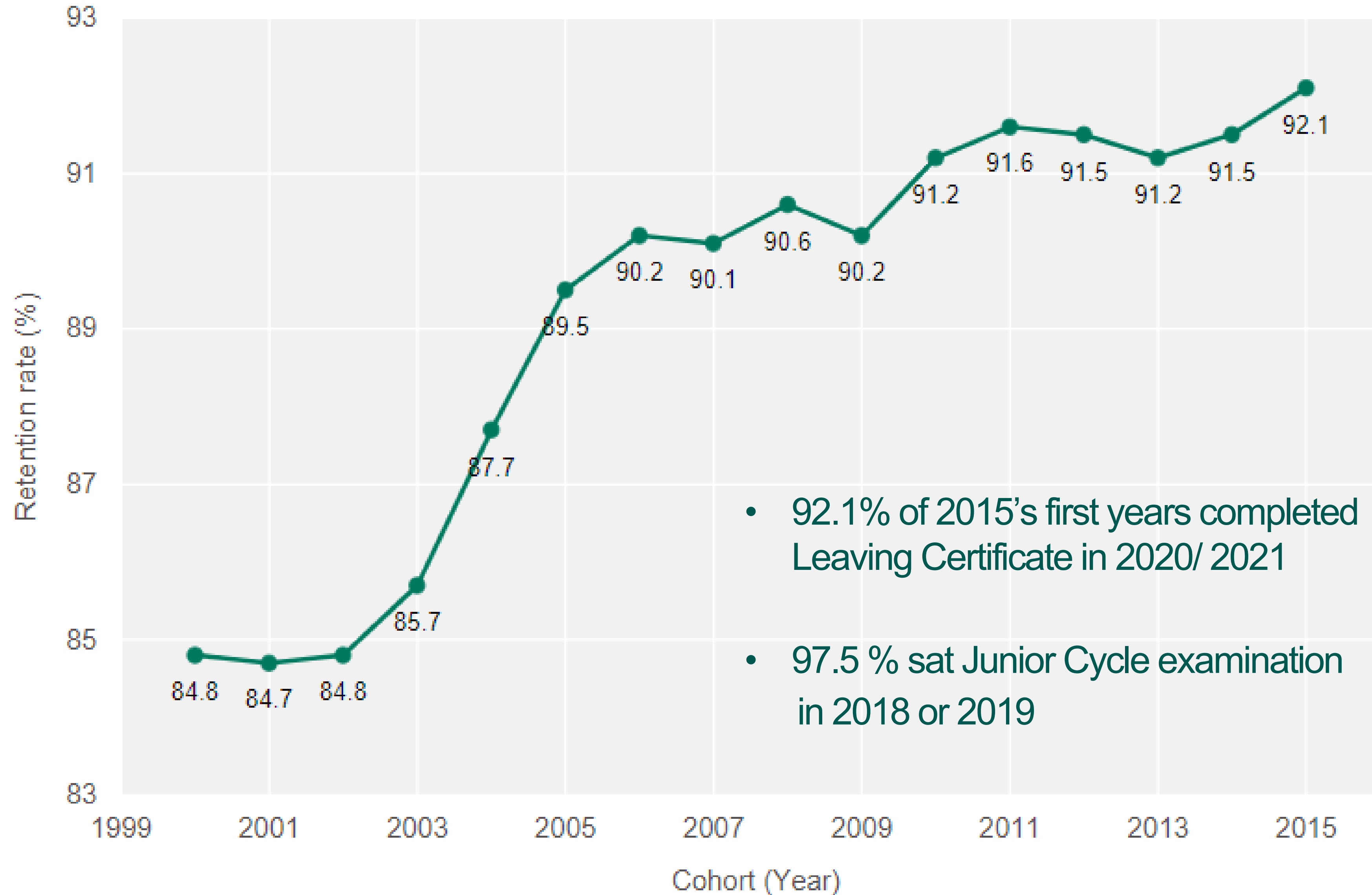
- Focus on developing the core social and emotional skills of self-awareness, self-management, responsibility decision-making, social awareness and relationship skills
- Learning outcomes include that students should be able to:

“...demonstrate skills and strategies to help make informed choices that support health and wellbeing and apply them in real-life situations that may be stressful and/or involve difficult peer situations”

“...discuss the physical, social, emotional and legal consequences of using addictive substances – immediate and long-term”

Students completing Leaving Certificate (Retention)

Figure 1 Retention rates, entry cohort 2000–2015



Delivering equality of opportunity in Schools: DEIS programme

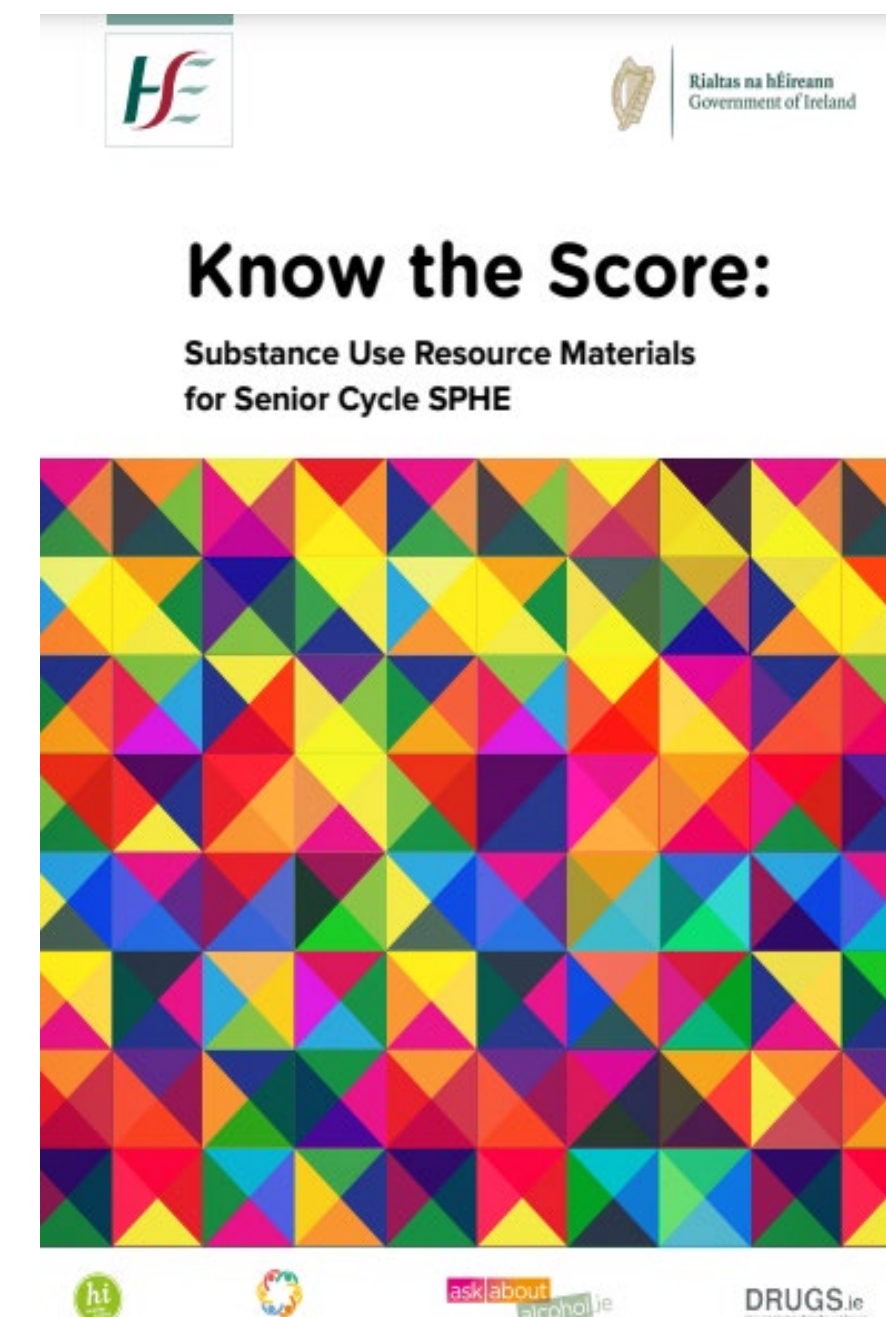


- Supports 240,000 students in approx. 1,200 schools (€180m)
- 322 new schools from September 2022
- Home-School Community Liaison Scheme (€35m)
 - promote partnership between parents, teachers, and community family support services
 - liaison between family and school and other services
- School Completion Programme (€30m+)
 - for those at risk of early school leaving
 - targeted support at primary and post-primary
 - tailored local interventions

Cross-government collaboration



- North East Inner City Initiative (NEIC)
- Department funding support for Local Drug Task Force Projects
 - Blanchardstown Early School-leavers
 - Crinian Youth Project
 - Familibase
- Know the Score Evaluation Steering Group (with Department of Health and HSE)



What next?



- Strengthening of SPHE delivery – current consultation open at ncca.ie, go to the news section
- Continued focus on wellbeing, school retention and completion
- Active engagement across Government and with key stakeholders
- Keeping students at the centre



An Roinn Oideachais
Department of Education

Thank you