

North East Inner City

Social and Economic Regeneration

Presentation to Citizens' Assembly on Drugs Use
Session 4 – Perspectives on prevention

30 September, 2023



DUBLIN
NORTH EAST
INNER CITY



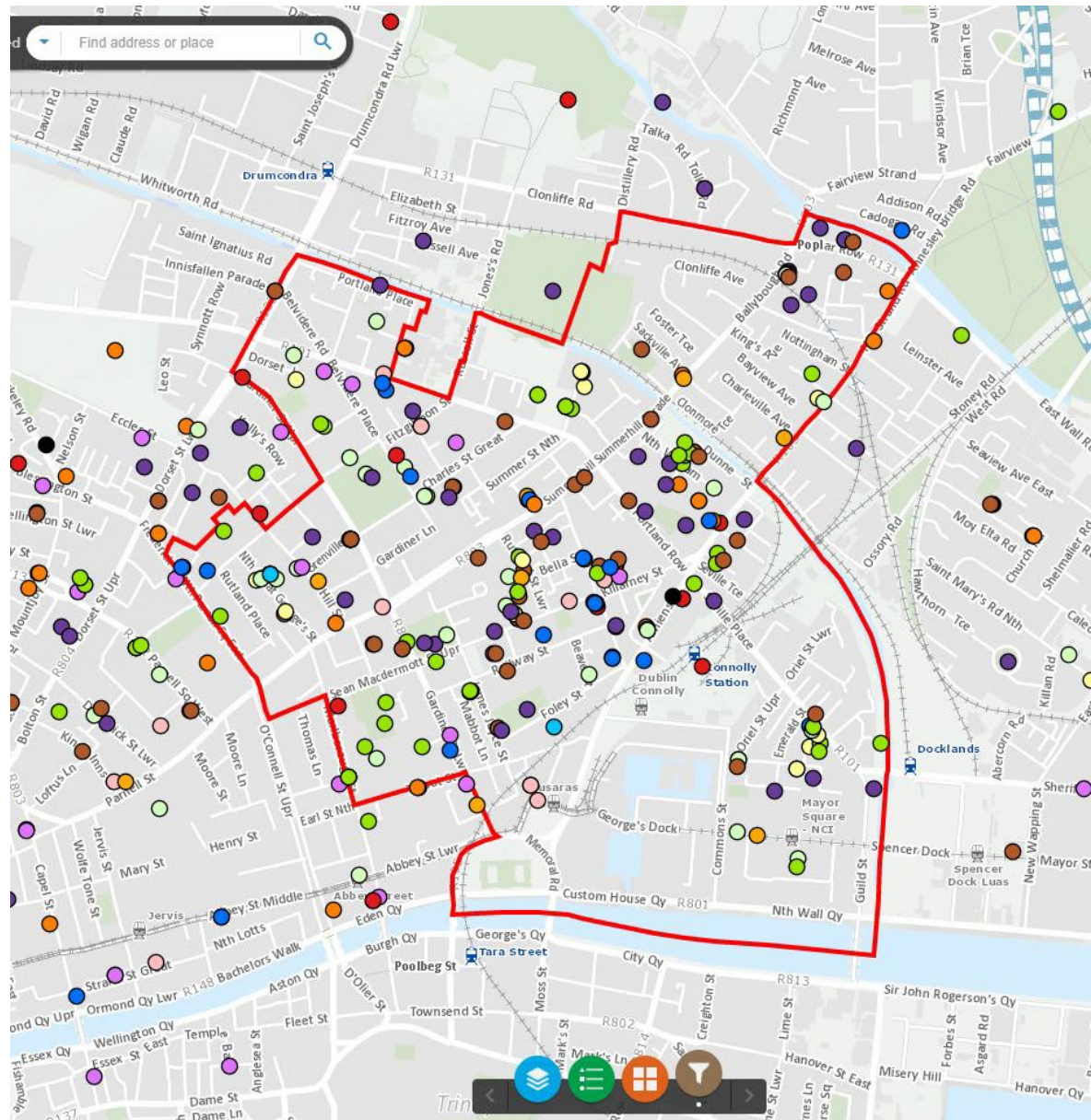
DUBLIN NORTH EAST INNER CITY

Jim Gavin
Chairperson
NEIC Project Implementation Board



Making the North East Inner City a safe, attractive and vibrant living and working environment for the community and its families with opportunities for all to lead full lives.

NEIC Map



<https://dublinneic.maps.arcgis.com/apps/webappviewer/index.html?id=e738482777d3404b91174a419b76605e>



NEIC History

“Creating a better future”

2016 was a difficult time for the community in NEIC, a community that had a long history of disadvantage.

Ministerial Task Force Chaired by the then Taoiseach, Enda Kenny appoints Kieran Mulvey to identify a way forward-
The Mulvey Report

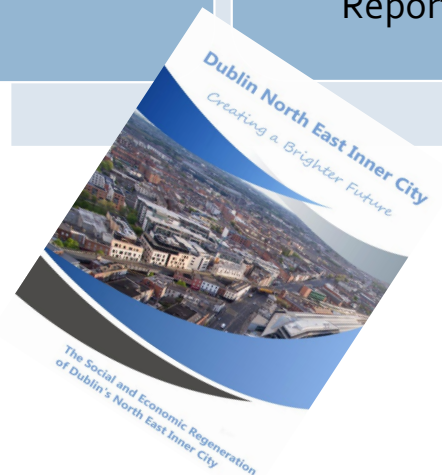
2017 -2019
The NEIC Initiative works with the community and agencies to advance actions from Mulvey Report

2020-2023
A Strategic Plan was developed to build on the Mulvey actions.

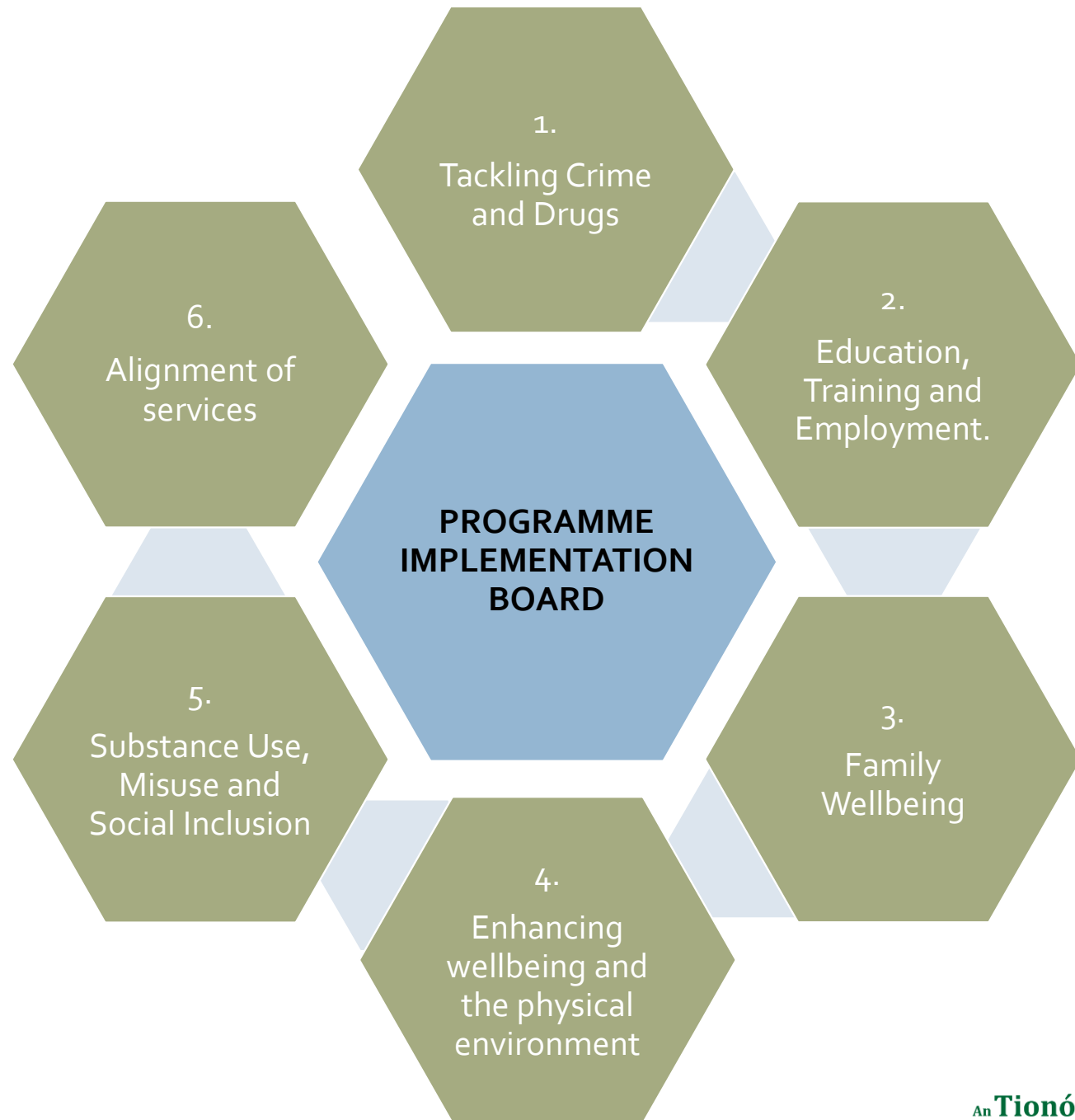
2024 – 2026
Strategic Review now commenced to assess work complete as set goals for next 3 years.



DUBLIN
NORTH EAST
INNER CITY



6 Subgroups



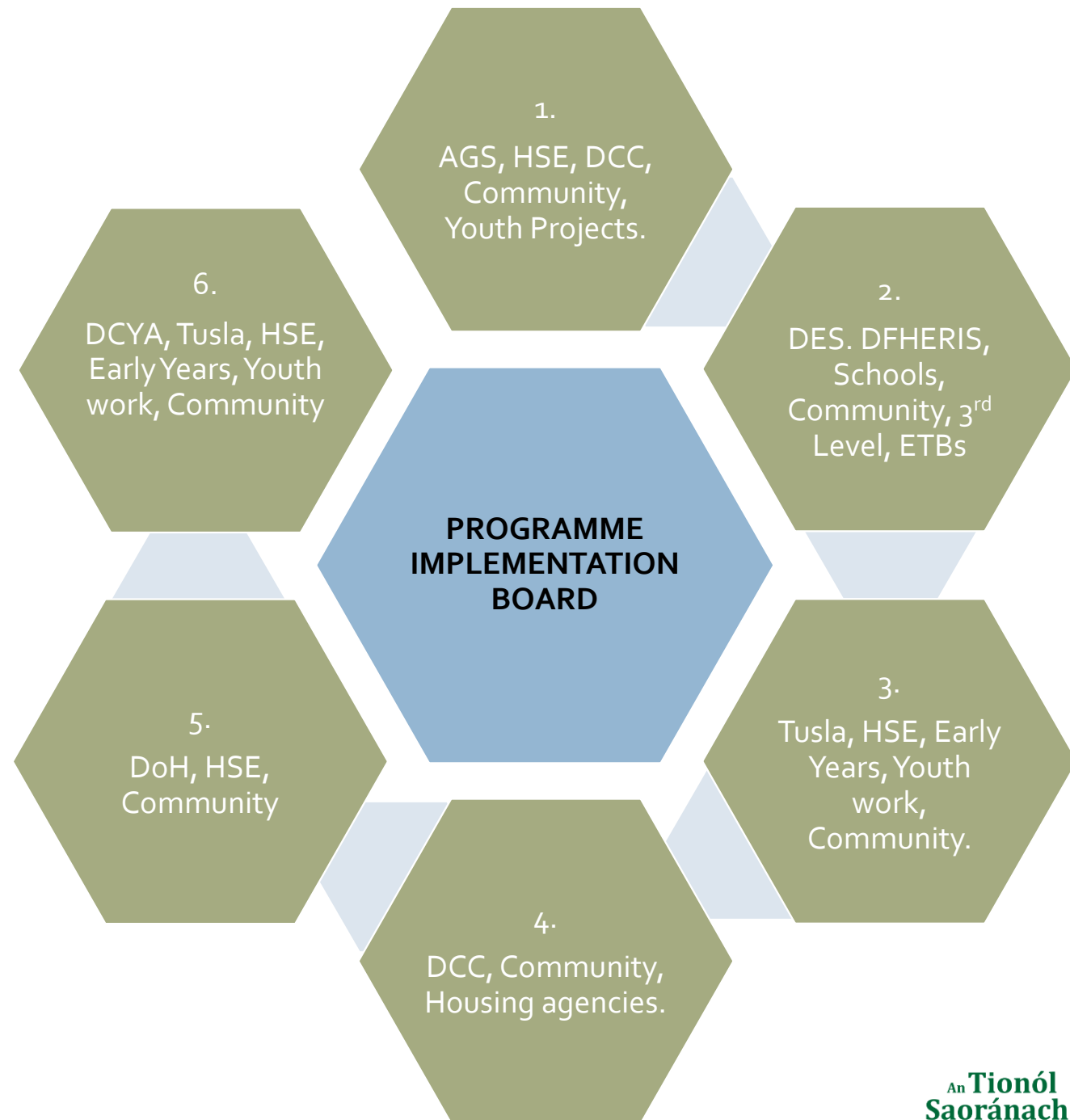
**DUBLIN
NORTH EAST
INNER CITY**

Within and across each subgroup there is ongoing work across:

- Inter-departmental
- Interagency
- Government depts



DUBLIN
NORTH EAST
INNER CITY



Impact of Drugs on NEIC



- Drugs have had a major detrimental impact on the NEIC:
 - The legacy of the heroin epidemic in the late 1990s, with many people still on long-term methadone treatment
 - The widespread availability of drugs in the area, linked to public transport hubs and the Dublin port
 - The intimidation and violence of the community by the criminal gangs who control the drug trade.

SUBGROUP 5:

Substance Use, Misuse and Social Inclusion



- **NEIC supports the health-led approach to drug use**, in line with national drugs strategy, *Reducing Harm, Supporting Recovery*.
 - While policing has an important role - in the long-term we must treat drug use as a health issue.
 - Making people feel safe in their community goes hand in hand with helping people to recover from drug use.
 - The **NEIC** has supported a range of initiatives to meet the health and social needs of people who use drugs:

INCLUSION HEALTH HUB (Summerhill)

- A one-stop-shop with a range of person-centred health & social care services for vulnerable groups (e.g. homeless, migrants, Roma,)
 - Facilitates outreach work to clinics and hostels and supports public health initiatives (e.g. Breast Check)
 - Hosts allied professionals, including physios, social workers and homeless case workers.
 - Strong emphasis on interagency collaboration.



DUBLIN
NORTH EAST
INNER CITY

CASE MANAGEMENT FOR PEOPLE WITH HIGH DRUG DEPENDENCY

- Case management is a shared framework for managing the care of people who use drugs with high and complex needs.
 - Includes assistance with housing, health, education, employment, addiction, mental health, social welfare, social work and probation services.
 - Engages with service users from drug clinics and community-based drug services; also self-referrals and referrals from public services (Probation Service, HSE, Tusla).
 - Since 2019 to date:
 - ✓ 800 client assessments
 - ✓ 18,000 sessions in the NEIC catchment
 - Funded by HSE and delivered by Chrysalis - Community Drug Project:



DUBLIN
NORTH EAST
INNER CITY



CHRYSALIS
COMMUNITY DRUG PROJECT

An Tionól
Saoránach  The Citizens'
Assembly

EMPLOYMENT ACCESS PROGRAMME FOR PEOPLE IN RECOVERY



- *Career's Edge* - a focused programme of supports to enhance the employment prospects of people in recovery from substance use.
 - Bridge the gap between rehabilitation/ treatment supports and mainstream education and employment opportunities
 - Twenty week programme offers a strengths & capacities approach; 1 to 1 supports with focus on '**what matters to you?**' rather than 'what is the matter with you!?'
 - Outcomes:
 - ✓ 50% progress to employment
 - ✓ 40% progress to education

ASSERTIVE ON-STREET OUTREACH TO VULNERABLE GROUPS



DUBLIN
NORTH EAST
INNER CITY

- The programme supports people who have complex and multiple needs (e.g. addiction, criminality, homelessness and mental health) and helps them engage effectively with support services, often for the first time and to identify and achieve their goals.
 - Known as **LEAR** (Law Enforcement Assisted Recovery), the programme supports people to move away from criminality and antisocial behaviour and towards their personal recovery.
 - In **2023**, LEAR has worked with **380** people in the NEIC & wider Dublin 1 area.
 - Funded by HSE and delivered by:



CASE MANAGEMENT FOR PEOPLE IN PRIVATE EMERGENCY ACCOMMODATION



- Provides in-reach case management supports to the high concentration of homeless people in private emergency accommodation (PEA) in the NEIC area.
 - Offer supports and care planning to people having issues around housing, addiction, physical health, mental health, meaningful use of time & legal issues, with nursing team also available to people living in PEAs/
 - To date in **2023**:
 - ✓ 888 initial assessments
 - ✓ With 649 offered case management supports
 - Funded via HSE in partnership with DRHE (Dublin Region Homeless Executive) and delivered by:



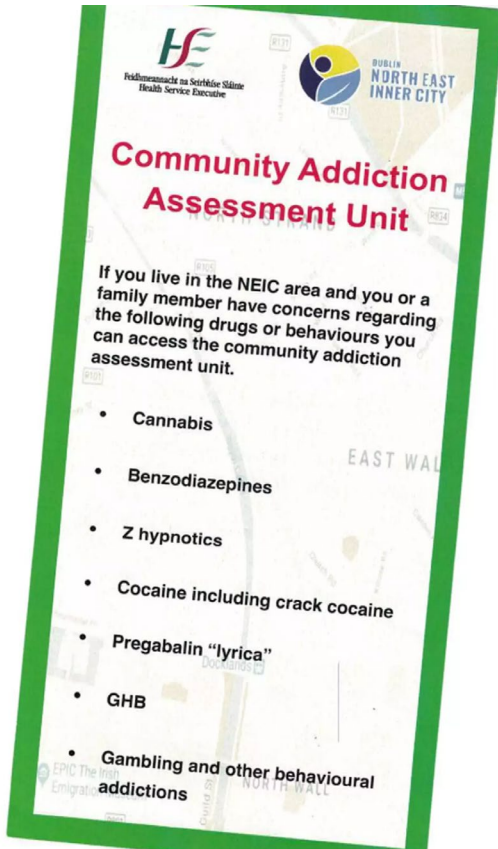
ANA LIFFEY
DRUG PROJECT

An Tionól
Saoránach



The Citizens'
Assembly

RESIDENTIAL DRUG TREATMENT SERVICE

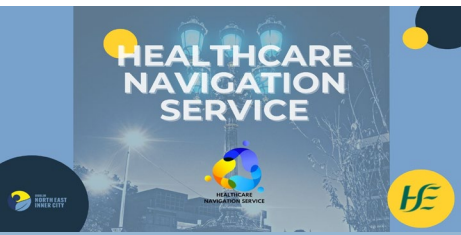


- Ten bed stabilisation unit serving the NEIC.
- Five week programme offers stabilisation for:
 - opiate substitution
 - benzodiazepine
 - poly-substance and/or alcohol use
- Level 2 prescribing GP with clinics on-site daily with 24-hour on-site nursing cover and operates under full HSE Clinical Governance.
- All referrals must be from
 - HSE Clinic, or
 - Community drug service in the NEIC.
- Since **January 2022 to date:**
 - ✓ **152** people have been admitted
 - ✓ With **93** completing their treatment (**64%**)



OTHER DRUG-RELATED INITIATIVES WITHIN THE NEIC

- HEALTHCARE NAVIGATION SERVICE – people on release from prison
- Drug-related intimidation and violence engagement (DRIVE) – individuals and families impacted by criminal gangs (e.g. drug debts)
- FRONTLINE - Community alcohol treatment service – people with drug and alcohol addiction
- RECOVERY COLLEGE – Working in the NEIC to provide recovery based education and dual diagnosis for people with mental health & substance use
- HEALTHY COMMUNITIES PROJECT – tackling health inequalities in the NEIC areas by building community capacity to address health issues affecting them.



NEIC Challenges: Diverse responses to many needs.



NEIC Challenges:

Diverse responses to many needs.



Deliberative Democracy

- getting people closer to our govt
- citizens' shaping legislation & policy
 - balanced discourse
 - different views
- conscientious weighting of arguments
- clarification of position
- coming to a consensual outcome



The responsibility of a human being is to be a great ancestor



DUBLIN NORTH EAST INNER CITY

Dublin City Council North East Inner City Programme Office,
51-53 Sean McDermott Street Lower,
Dublin City Council,
Central Area Headquarters,
Dublin 1 (D01 HW44)

(01) 222 6604

neic@dublincity.ie