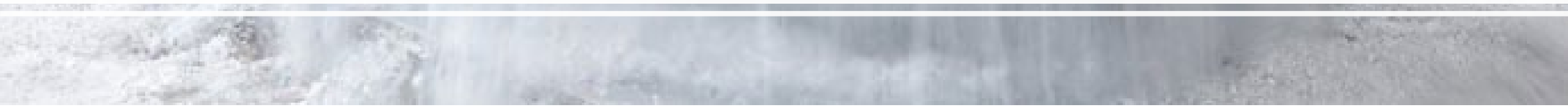


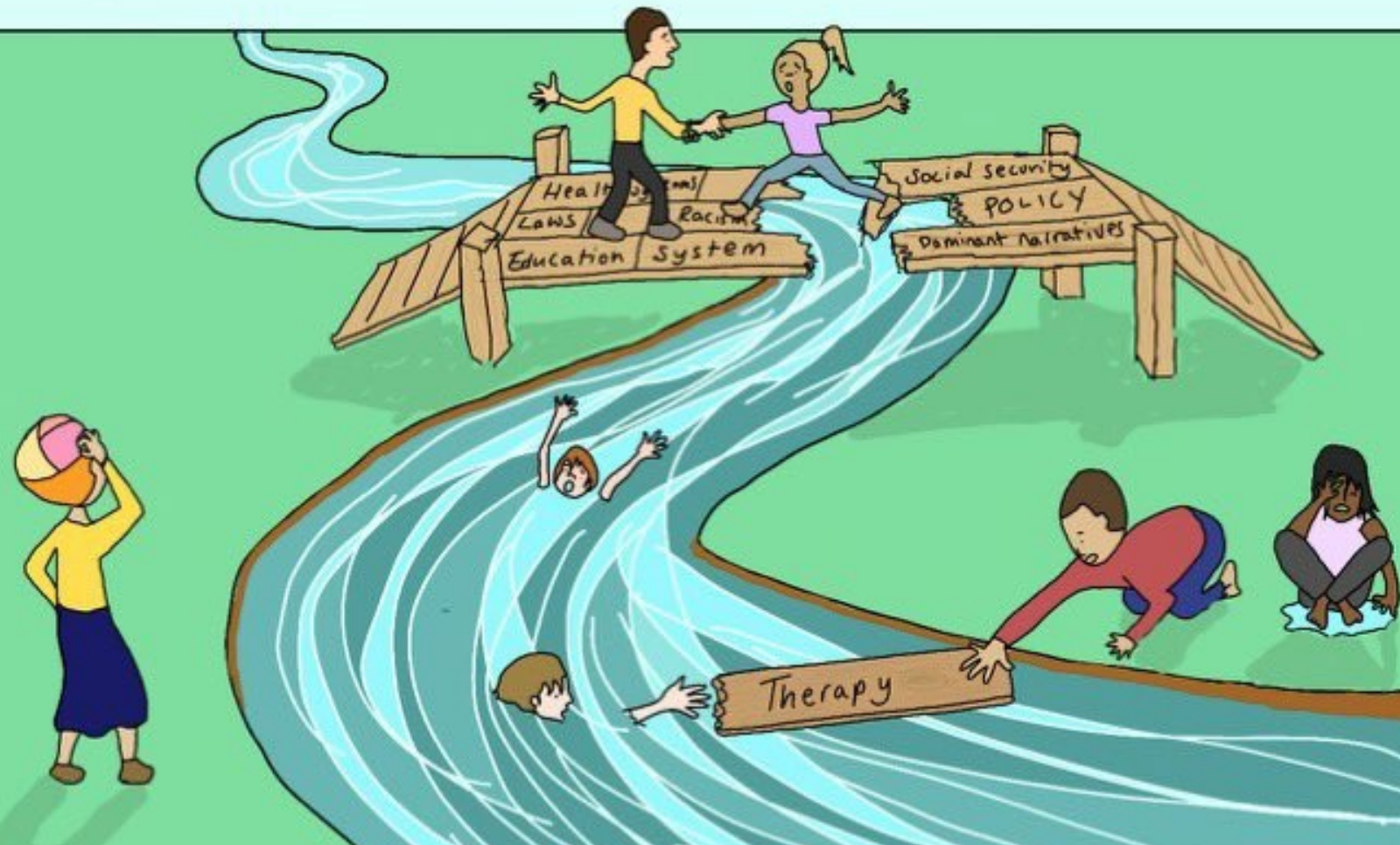


“Trying to empty a bath with the taps on full....”

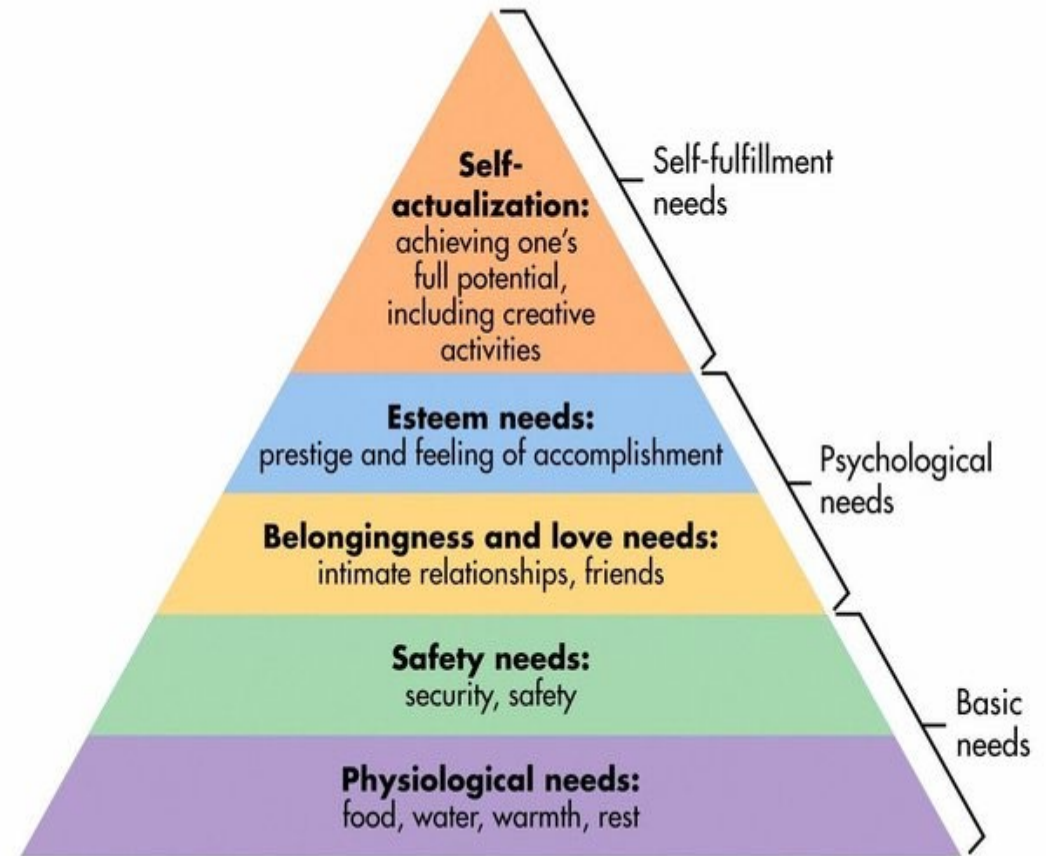
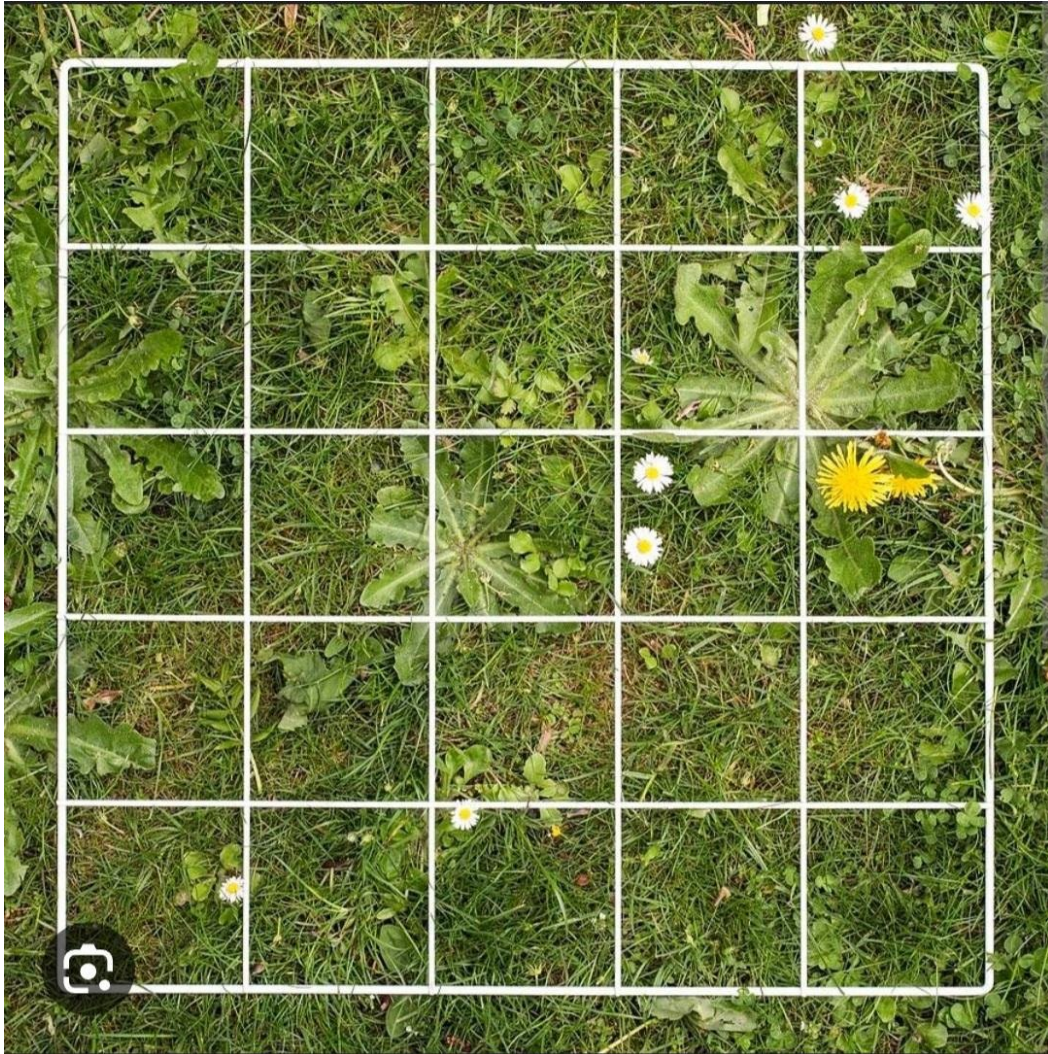


There comes a point where we need to stop just pulling people out of the river. Some of us need to go upstream and find out why they are falling in. (Desmond Tutu)

Early  
intervention  
and  
prevention:



# You can't solve one without the other....





One child's journey vs another:





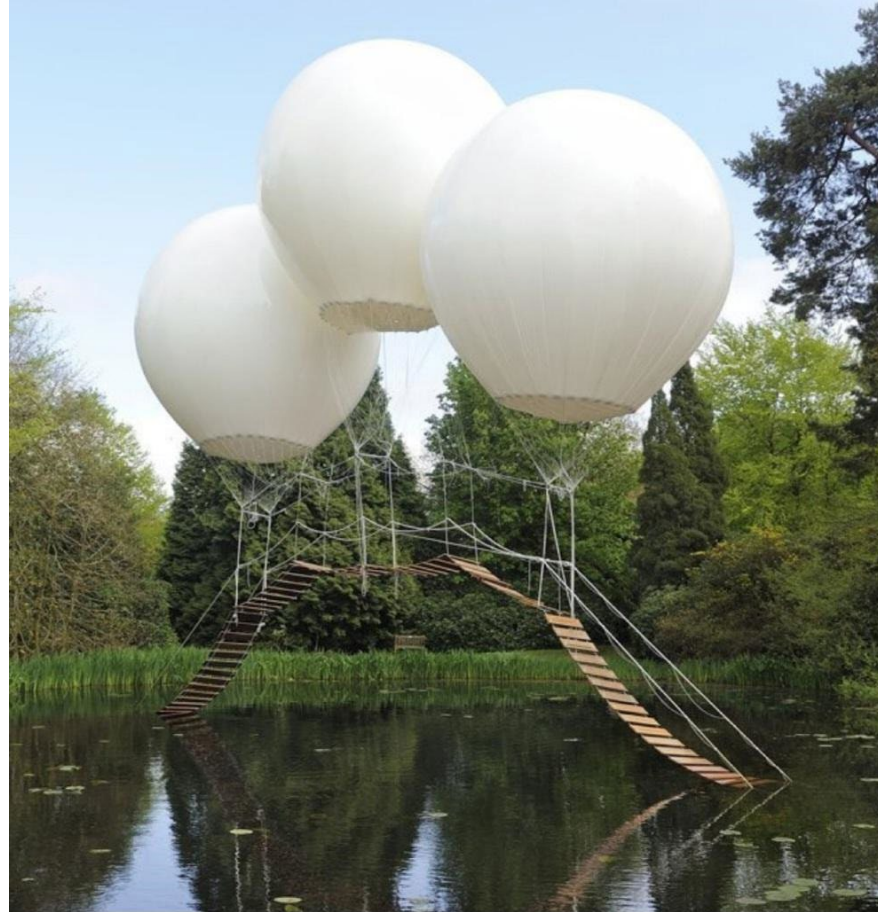
Lynn Ruane:

- “If we look inside our state run institutions, our prisons, our psychiatric hospitals, we will find the carnage that childhood poverty leaves”

How often do you hear:

- “Not meeting the threshold”
- “Not in enough crisis”
- “No beds”

Investment & resourcing is required to break cycles-lift people up- equity





# Kinship Care Ireland

## TÚSLA

An Ghníomhaireacht um  
Leanaí agus an Teaghlach  
Child and Family Agency

## treoir

Informing  
Unmarried  
Parents

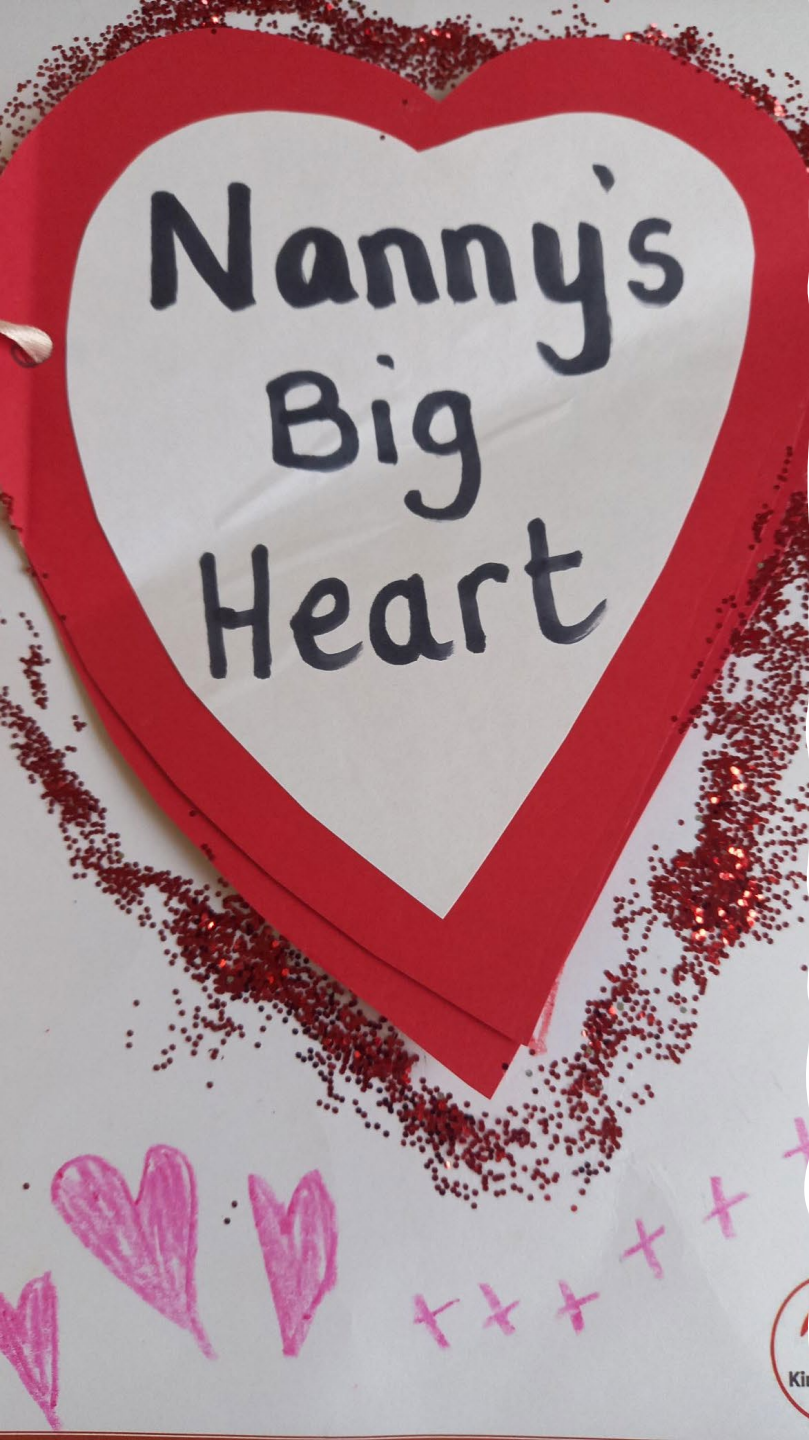


---

Kinship Care is the fulltime care of a child by a relative or close family friend, when a parent can't. Circumstances leading to kinship care are rooted in trauma/tragedy. The death of a parent, significant substance misuse, illness, incarceration, abuse, parental abandonment and at times parent capacity.

Due to the nature of these reasons, the need for kinship care can arise overnight in response to a crisis, there is no preparation time.

Kinship Care Ireland work with and for kinship families.



# Challenges for 'Informal' Kinship Families

---

## Legal Status

- Rights and Responsibilities

## Financial Support

- Child Benefit
- Guardian's Payment

## Family Support

- Needs of Children and Young People

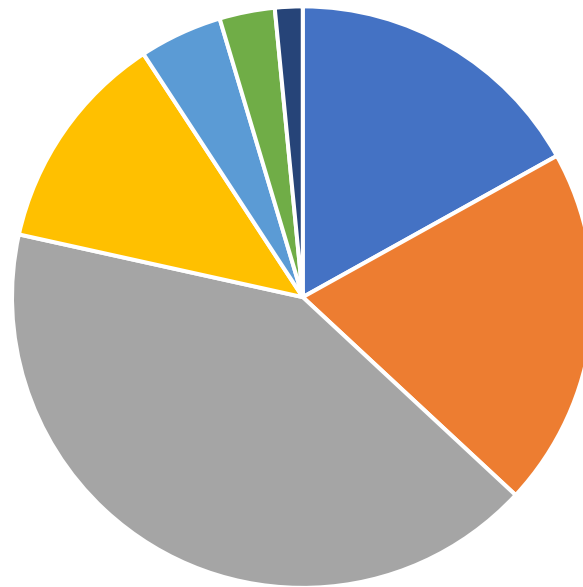
## Lack of Data

- not recognised, valued or supported

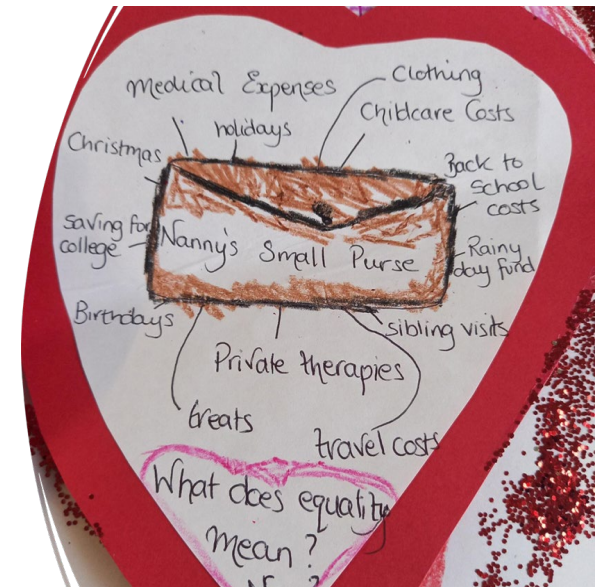


# Kinship Care Ireland- snapshot of engagement, Quarter 2 of 2023

79 Kinship Carers engaged with Kinship Care Ireland, 67 of those advised;  
Reason for Kinship Care:



- Death 11
- Domestic Violence 8
- Imprisonment
- Mental Health 13
- Abandonment 3
- Parent Capacity 2
- Substance Misuse 27



Lost and Alone



Though no fault of my own  
I was lost and alone.  
I didn't know what to do  
and had no place to call  
home!

To my delight my Auntie  
Shone a light and guided  
me into their life.

I found happiness and  
love with a bedroom  
of my own  
in my happy ever after  
home! No longer alone!

home!



We asked Kinship Carers what the benefits are;

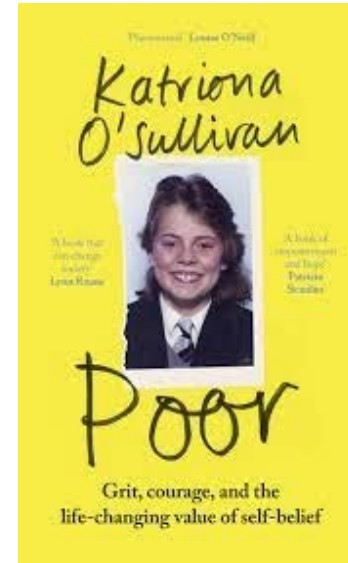
**"He was fully traumatised when he came to me. I get a buzz out of seeing him now, coming back to himself... Back laughing and being himself."**

Kinship Carer,  
Dublin, 2023.



[laura@kinshipcare.ie](mailto:laura@kinshipcare.ie) or  
[info@kinshipcare.ie](mailto:info@kinshipcare.ie)  
087 1487124  
[www.kinshipcare.ie](http://www.kinshipcare.ie)

Kinship Care Ireland : Facebook,  
Instagram and X (Twitter)



# Suggestions from submission:

- **Investment in the following would increase accessibility for families impacted by drugs:**
- Additional funding to roll out accessible community-based peer groups for kinship carers and kinship care children.
- Investment in existing supports such as; Systemic Trauma Therapy to support addressing the underlying challenges of drug related difficulties in a safe space to support long-term family relationship repair.
- Funding the roll out of the Young Person Support Programme and other such targeted support for children living in homes impacted by substance misuse would support buffer the impact of hidden harm and increase peer support.
- Increased treatment bed facilities & access routes for all, specifically for mother and baby beds to support recovery when it is wanted, to avoid waitlists- this will also support reduce the amount of time a child is exposed to hidden harm.
- Investment in child friendly access visit centres.
- Investment in case-management wrap around individual and family support services in communities.
- Dual diagnosis support.
- Investment in child keywork supports.
- General trauma awareness training in services such as schools/GP's etc. and investment in resources to support children to regulate by provision of ie. morning programmes, sensory areas, breakfast clubs, movement breaks, nurture rooms, Thera-play etc.
- Investment in Functional Family Therapy support.
- Education programmes- harm reduction.
- Early intervention- youth diversion.